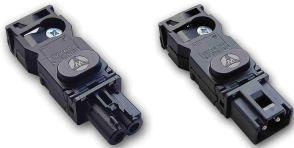


# Male and Female Connection with Terminal Block for AC Lamp

## Data Solutions

### CATALOG NUMBER

**57274**



The enclosure light provides a compact and flexible solution, and offers fast, easy assembly and installation. For mounting flexibility, the LED light can be fastened to the enclosure with screws or quickly attached to any flat steel surfaces with optional magnetic kits. A motion sensor is also available.

### CERTIFICATIONS



### FEATURES

Lights can be easily mounted vertically or horizontally.

Simple through-wiring based on a plug-and-play system.

### PRODUCT ATTRIBUTES

Input Voltage AC: 250V max

Accessory Type: Lights

Protection Rating: IP20

Package Quantity: 1

Color: Black

Depth: 14mm

Finish: Smooth Matte

Height: 53mm

Material: Plastic

Product Type: Light

Type: Cabinet Light; Terminal Block

Width: 18mm

Nominal Voltage: 250V

Operating Temperature: 60°C min

Weight: 0.07kg

## WARNING

nVent products shall be installed and used only as indicated in nVent's product instruction sheets and training materials. Instruction sheets are available at [www.nvent.com](http://www.nvent.com) and from your nVent customer service representative. Improper installation, misuse, misapplication or other failure to completely follow nVent's instructions and warnings may cause product malfunction, property damage, serious bodily injury and death and/or void your warranty.



Our powerful portfolio of brands:

**CADDY   ERICO   HOFFMAN   ILSCO   SCHROFF   TRACHTE**