

# MBJ Grounding and Bonding Braid, Tinned Copper

## Power Utilities



MBJ Grounding and Bonding Braids are a reliable and convenient grounding solution for applications that require flexibility and durability. The tinned copper ground braids with massivated palms come ready to install without any additional cutting, stripping, crimping or punching and do not require the addition of tin or crimped lugs. The proprietary manufacturing process optimizes the electrical contact between each wire and helps eliminate moisture issues in the palms, preventing corrosion and lengthening the useful life of the braid.

### CERTIFICATIONS



### FEATURES

Complete range of earth/ground flexible connections from 6 - 100 mm<sup>2</sup> (11.84 - 197.35 kcmil) cross section and from 100 - 500 mm (3.937" - 19.685") length

Integral palm, without tin or crimped lugs for superior electrical contact and tensile strength resistance

Resistant to vibration and fatigue, reducing maintenance

Provides weight savings, material savings and lower impedance when compared to similar lugged cables with insulation

Ready to use out of the box, eliminates the need for cutting, stripping, crimping and punching

Quick and easy to install

Recommended by the EMC/EMI directives and less impedance than cables

EAC compliant

RoHS compliant

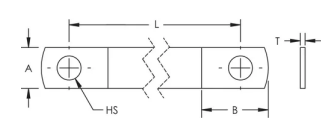
Compliant to ISO 6469-1 (Electrically propelled road vehicles - Part 1: Rechargeable energy storage system) - Section 6.2.2 Vibrations

SPECIFICATIONS

Table 1/2						
Catalog Number	Article Number	Working Temperature	Certification Details	Ampacity	Thickness (T)	A
MBJ6-150-6	556600	105 °C Max	UL® 467	40 A	1.10 mm	11 mm

Table 2/2			
Catalog Number	Article Number	B	Unit Weight
MBJ6-150-6	556600	18 mm	0.010 kg

DIAGRAMS



WARNING

nVent products shall be installed and used only as indicated in nVent's product instruction sheets and training materials. Instruction sheets are available at [www.nvent.com](http://www.nvent.com) and from your nVent customer service representative. Improper installation, misuse, misapplication or other failure to completely follow nVent's instructions and warnings may cause product malfunction, property damage, serious bodily injury and death and/or void your warranty.



Our powerful portfolio of brands:

CADDY   ERICO   HOFFMAN   ILSCO   SCHROFF   TRACHTE