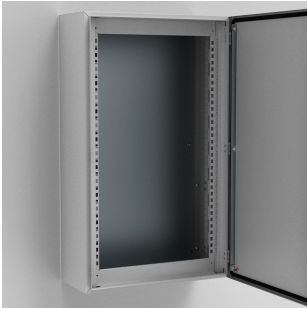


# Modular System Frames For Power Distribution, MSMSM



The mild steel modular system frame for wall mounted enclosures, MSMSM, has two mounting levels. The first is for fixing front panels and the second for mounting equipment. The frame can be equipped before mounting in the enclosure and allows for the use of both modular and non-modular components.

## FEATURES

Description: Two single vertical profiles, which can be used both for front covers and assembly of components. A cost effective solution for panel builders, reducing assembly time, which also enables assembly outside the enclosure. Useful height for front covers is, Height – 100 mm.

Material: 1.5 mm steel.

Finish: RAL 7035.

Pack quantity: 1 kit.

Mounting requirements: To be assembled on MAS and ASR enclosures.

The frame provides customers with a cost effective solution for small sized power distribution panels

The frame ensures that both modular and non-modular components can be installed into the same enclosure

Customers can assembly the frame outside of the enclosure, if required, which saves installation time as well as labour cost

Pack quantity: 1 kit

SPECIFICATIONS

**Thickness:** 1.5mm  
**Color:** Light Gray  
**Material:** Mild Steel  
**Finish:** Powder Coated  
**Color Code:** RAL 7035

Table 1/1				
Catalog Number	Height	Width	Enclosure Material	Quick Ship
MSMSM0606	600mm	600mm	Mild Steel	No
MSMSM0608	600mm	800mm	Mild Steel	No
MSMSM0806	800mm	600mm	Mild Steel	No
MSMSM0808	800mm	800mm	Mild Steel	No
MSMSM1006	1000mm	600mm	Mild Steel	No
MSMSM1008	1000mm	800mm	Mild Steel	No
MSMSM1206	1200mm	600mm	Mild Steel	No
MSMSM1208	1200mm	800mm	Mild Steel	No

WARNING

nVent products shall be installed and used only as indicated in nVent's product instruction sheets and training materials. Instruction sheets are available at [www.nvent.com](http://www.nvent.com) and from your nVent customer service representative. Improper installation, misuse, misapplication or other failure to completely follow nVent's instructions and warnings may cause product malfunction, property damage, serious bodily injury and death and/or void your warranty.



Our powerful portfolio of brands:

**CADDY   ERICO   HOFFMAN   ILSCO   SCHROFF   TRACHTE**