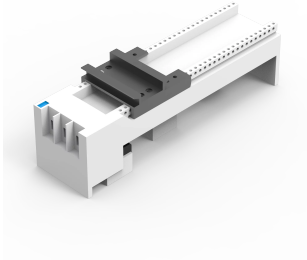


# Busbar Adapter 80A Without Cables, W060



Busbar adapter with one mounting rail with screw terminals 16 mm<sup>2</sup>.

## INDUSTRY STANDARDS

---

UL

CSA

GL

## FEATURES

---

Approvals: CSA, UL, GL

Poles: 3-pole

Power dissipation at 80% load: 6 W

For busbars: 12, 15, 20, 25, 30 × 5, 10

Rated current: 80 A

Rated voltage: 690 V

Pack quantity: 1 pc.

Description: Busbar adapter 80 A. With one adjustable mounting rail. With terminals 16 mm<sup>2</sup>, operated from the back.

SPECIFICATIONS

Table 1/1						
Catalog Number	Height	Width	Depth	Material	Finish	Color
32466	200mm	54mm	63mm	Plastic, Mild Steel	Plated	Black, Light Gray
32469	200mm	72mm	63mm	Plastic, Mild Steel	Plated	Black, Light Gray

WARNING

nVent products shall be installed and used only as indicated in nVent's product instruction sheets and training materials. Instruction sheets are available at [www.nvent.com](http://www.nvent.com) and from your nVent customer service representative. Improper installation, misuse, misapplication or other failure to completely follow nVent's instructions and warnings may cause product malfunction, property damage, serious bodily injury and death and/or void your warranty.



Our powerful portfolio of brands:

CADDY   ERICO   HOFFMAN   ILSCO   SCHROFF   TRACHTE