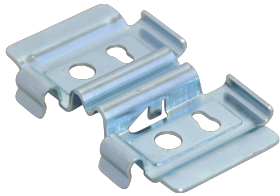


# PEMSA Wire Basket Tray Quick Base Joint



## CERTIFICATIONS



## FEATURES

Quick and easy to use

Eliminates the need for additional hardware

Suitable for 300 to 600mm wide tray, and heights of 60 and 100mm

IEC 61537 load rating and earthing compliant

## SPECIFICATIONS

**Finish:** Electrogalvanized

**Material:** Steel

Table 1/2

Catalog Number	Article Number	Color	Diameter	Hole Size 1	Hole Size 2	Length
WBTQBCLIPBG	820708	Black	4.0 - 4.5 mm	9 mm	7.5 mm	91.5mm
WBTQBCLIPBG	820713		4.0 - 4.5 mm	9 mm	7.5 mm	91.5mm

Table 2/2

Catalog Number	Article Number	Width	Height	Certifications
WBTQBCLIPBG	820708	59 mm	14.5 mm	CE, CADDY WBTQBCLIPBG, CE, CADDY EU WBT QB2, UKCA, CADDY WBTQBCLIPBG
WBTQBCLIPBG	820713	59 mm	14.5 mm	CE, CADDY WBTQBCLIPBG, UKCA, CADDY WBTQBCLIPBG

## WARNING

nVent products shall be installed and used only as indicated in nVent's product instruction sheets and training materials. Instruction sheets are available at [www.nvent.com](http://www.nvent.com) and from your nVent customer service representative. Improper installation, misuse, misapplication or other failure to completely follow nVent's instructions and warnings may cause product malfunction, property damage, serious bodily injury and death and/or void your warranty.

### North America

+1.800.753.9221

Option 1 – Customer Care

Option 2 – Technical

Support

### Europe

Netherlands:

+31 800-0200135

France:

+33 800 901 793

### Europe

Germany:

800 1890272

Other Countries:

+31 13 5835404

### APAC

Shanghai:

+ 86 21 2412 1618/19

Sydney:

+61 2 9751 8500



Our powerful portfolio of brands:

CADDY

ERICO

HOFFMAN

ILSCO

SCHROFF

TRACHTE

