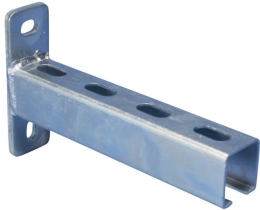


# Cantilever Arm with E4 Channel



## CERTIFICATIONS



## FEATURES

Perforated, cold rolled

Slotted backplate

## SPECIFICATIONS

**Finish:** Electrogalvanized

**Material:** Steel

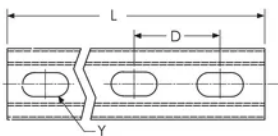
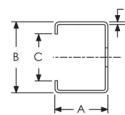
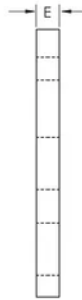
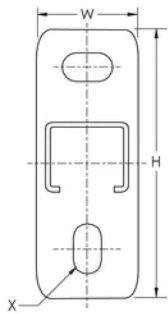
Table 1/1

Catalog Number	Article Number	Length (L)
CE420H0200EG	599935	200mm
CE420H0300EG	599950	300mm
CE420H0350EG	599960	350mm

Catalog Number	Article Number	Length (L)
CE420H0450EG	599970	450mm
CE420H0550EG	599980	550mm
CE420H0650EG	599990	650mm
CE420H0800EG	599995	800mm

**Thickness (T):** 2 mm  
**E:** 6 mm  
**X:** 11 x 18 mm  
**Y:** 14 x 27 mm  
**C:** 15.5 mm  
**B:** 38 mm  
**Width (W):** 40 mm  
**A:** 40 mm  
**D:** 50 mm  
**Height (H):** 120 mm

## DIAGRAMS



## WARNING

nVent products shall be installed and used only as indicated in nVent's product instruction sheets and training materials. Instruction sheets are available at [www.nvent.com](http://www.nvent.com) and from your nVent customer service representative. Improper

installation, misuse, misapplication or other failure to completely follow nVent's instructions and warnings may cause product malfunction, property damage, serious bodily injury and death and/or void your warranty.

**North America**

+1.800.753.9221

Option 1 – Customer Care

Option 2 – Technical

Support

**Europe**

Netherlands:

+31 800-0200135

France:

+33 800 901 793

**Europe**

Germany:

800 1890272

Other Countries:

+31 13 5835404

**APAC**

Shanghai:

+ 86 21 2412 1618/19

Sydney:

+61 2 9751 8500



Our powerful portfolio of brands:

**CADDY ERICO HOFFMAN ILSCO SCHROFF TRACHTE**

