

2-2 Hole Corner Gusset



FEATURES

Used to create metal frames with nVent CADDY Eristrut channels

SPECIFICATIONS

Table 1/2

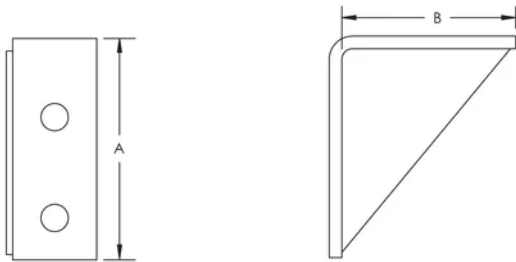
Catalog Number	Article Number	Material	Finish	Orientation	Hole Size (HS)	Thickness (T)
ZWA207L	387675	Steel	Hot-Dip Galvanized	Left Hand	14 mm	6 mm
ZW207	313400	Steel	Hot-Dip Galvanized	Right Hand	14 mm	6 mm
ZWA207	387670	Steel	Hot-Dip Galvanized	Right Hand	14 mm	6 mm
ZWA207EG	387671		Electrogalvanized	Right Hand	14 mm	

Table 2/2

Catalog Number	Article Number	A	B	Screw Included	Screw Diameter (Sc)	Screw Length (L)
ZWA207L	387675	106 mm	89 mm	No		
ZW207	313400	106 mm	89 mm	Yes	10 mm	25mm

CatalogNumber	Article Number	A	B	Screw Included	ScrewDiameter (Sc)	Screw Length (L)
ZWA207	387670	106 mm	89 mm	No		
ZWA207EG	387671	105 mm	90 mm	No		

DIAGRAMS



WARNING

nVent products shall be installed and used only as indicated in nVent's product instruction sheets and training materials. Instruction sheets are available at www.nvent.com and from your nVent customer service representative. Improper installation, misuse, misapplication or other failure to completely follow nVent's instructions and warnings may cause product malfunction, property damage, serious bodily injury and death and/or void your warranty.

North America

+1.800.753.9221
Option 1 – Customer Care
Option 2 – Technical Support

Europe

Netherlands:
+31 800-0200135
France:
+33 800 901 793

Europe

Germany:
800 1890272
Other Countries:
+31 13 5835404

APAC

Shanghai:
+ 86 21 2412 1618/19
Sydney:
+61 2 9751 8500



Our powerful portfolio of brands:

CADDY ERICO HOFFMAN ILSCO SCHROFF TRACHTE

