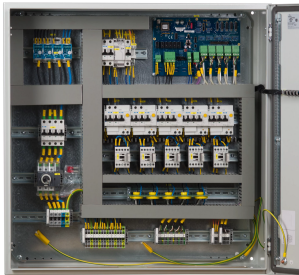


# ACS-30 Power Control and Distribution Panel



nVent RAYCHEM ACS-30 Control and Monitoring System provides centralized control and monitoring for multiple applications and consists of a centralised User Interface Terminal (UIT), up to 52 power & control modules (PCMs) distributed throughout the building, remote temperature monitoring modules (RMM2s) and the ProtoNode multi-protocol gateway. Applications include commercial freeze protection, surface snow melting, roof and gutter de-icing and flow and temperature maintenance. All heating cable circuits are controlled & monitored from the UIT providing status updates for up to 260 heating circuits.

## FEATURES

Energy savings: 24/7 time-clock control and schedulers, proportional ambient sensing control (PASC), hot water temperature maintenance with economy set back and pipe temperature monitoring, energy monitoring of individual circuits displaying both real time and cumulative kWh, system switching via multi-sensor control devices for ambient and surface temperature as well as moisture sensors

Built in safety: integrated electrical and circuit protection, automated self-test feature to ensure all circuits are functional, alarms to indicate loss of power/earth leakage/high or low temperatures, local and remote alarm outputs

Multiple communications: BMS, ModBus RTU protocol, ProtoNode pre-programmed multi-protocol gateways for translating into BacNet and MetaSys N2 systems

Distributed control: power control panels placed throughout the building avoids expensive power distribution wiring

Expandable: to meet building modification requirements or new system installations within a building

Reliable during long life: 6 year extended product warranty available

## SPECIFICATIONS

<b>Alarm Relay:</b>	1 x 3 A @ 277 VAC
<b>Nominal Voltage:</b>	230 V; 400 V
<b>IP Rating:</b>	IP54
<b>Ground-Fault Equipment Protection:</b>	Yes

Table 1/2

Catalog Number	Item Name	Circuit Breaker Quantity	Circuit Breaker	Main Switch Current Rating	Temperature Sensor Input Quantity	Height
1244-012868	ACS-30-EU-PCM2-5-20A	5	20 A, Type C	63 A	5	760 mm
1244-012869	ACS-30-EU-PCM2-10-20A	10	20 A, Type C	80 A	10	1000 mm
1244-012870	ACS-30-EU-PCM2-15-20A	15	20 A, Type C	100 A	15	1000 mm
1244-012871	ACS-30-EU-PCM2-5-32A	5	32 A, Type C	80 A	5	760 mm
1244-012872	ACS-30-EU-PCM2-10-32A	10	32 A, Type C	125 A	10	1000 mm
1244-012873	ACS-30-EU-PCM2-15-32A	15	32 A, Type C	160 A	15	1000 mm

Table 2/2

Catalog Number	Item Name	Width	Depth
1244-012868	ACS-30-EU-PCM2-5-20A	760 mm	300 mm
1244-012869	ACS-30-EU-PCM2-10-20A	1000 mm	300 mm
1244-012870	ACS-30-EU-PCM2-15-20A	1400 mm	300 mm
1244-012871	ACS-30-EU-PCM2-5-32A	760 mm	300 mm
1244-012872	ACS-30-EU-PCM2-10-32A	1000 mm	300 mm
1244-012873	ACS-30-EU-PCM2-15-32A	1400 mm	300 mm

## **WARNING**

---

nVent products shall be installed and used only as indicated in nVent's product instruction sheets and training materials. Instruction sheets are available at [www.nvent.com](http://www.nvent.com) and from your nVent customer service representative. Improper installation, misuse, misapplication or other failure to completely follow nVent's instructions and warnings may cause product malfunction, property damage, serious bodily injury and death and/or void your warranty.

### **North America**

Tel +1.800.545.6258

Fax +1.800.527.5703

[thermal.info@nvent.com](mailto:thermal.info@nvent.com)

### **Europe, Middle East, Africa**

Tel +32.16.213.511

Fax +32.16.213.604

[thermal.info@nvent.com](mailto:thermal.info@nvent.com)

### **Asia Pacific**

Tel +86.21.2412.1688

Fax +86.21.5426.3167

[cn.thermal.info@nvent.com](mailto:cn.thermal.info@nvent.com)

### **Latin America**

Tel +1.713.868.4800

Fax +1.713.868.2333

[thermal.info@nvent.com](mailto:thermal.info@nvent.com)

Our powerful portfolio of brands:

**RAYCHEM PYROTENAX TRACER NUHEAT**