

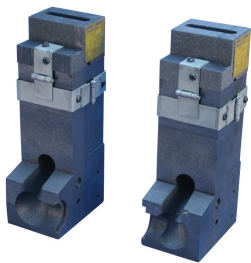
# Cable to Web of Rail Mold Pair, Power, 85-141 lb T-Rail, 350 kcmil Concentric

## Data Solutions

### CATALOG NUMBER

---

**PBW3D**



### FEATURES

---

Replacement mold pair designed for the installation of track circuits and jumper bonds to the neutral axis

Sold in pairs

### PRODUCT ATTRIBUTES

---

Material: Graphite

Rail Type: 85 lb to 141 lb T-Rail Sections

Bond Terminal Style: W

Conductor Size: 350 kcmil Concentric

Conductor Outer Diameter, Nominal: 17.3mm

Welder Style: T20

Mold Only: Yes

Welding Material: PB150 or PB150PLUSF80, Sold Separately

Handle Clamp: C105C, Sold Separately

## WARNING

---

nVent products shall be installed and used only as indicated in nVent's product instruction sheets and training materials. Instruction sheets are available at [www.nvent.com](http://www.nvent.com) and from your nVent customer service representative. Improper installation, misuse, misapplication or other failure to completely follow nVent's instructions and warnings may cause product malfunction, property damage, serious bodily injury and death and/or void your warranty.



Our powerful portfolio of brands:

**CADDY   ERICO   HOFFMAN   ILSCO   SCHROFF   TRACHTE**