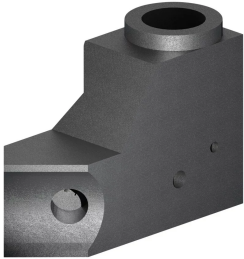


# Horizontal Pouring Basin, Side Fill, 45°, Right Hand



Angular side fill horizontal pouring basins are used when interferences of the structure will not allow top filling of the sleeve and the interferences are directly next to the tap hole in the sleeve.

## FEATURES

Made from heat-resistant graphite

Durable, re-usable and long lasting

Designed for use with T-Series and B-Series horizontal side fill sleeves

## SPECIFICATIONS

**Material:** Graphite

Table 1/2

Catalog Number	Diameter (Ø)	Length 1 (L1)	Length 2 (L2)	Width (W)	Height 1 (H1)	Height 2 (H2)
RBWS2620RHF	64 mm	141 mm	83 mm	76 mm	154mm	76mm
RBWS2620RHM	95 mm	141 mm	83 mm	76 mm	154mm	76mm
RBWS2620RHJ	76 mm	141 mm	83 mm	76 mm	154mm	76mm

Table 2/2

Catalog Number	Angle (a)
RBWS2620RHF	45 °

Catalog Number	Angle (a)
RBWS2620RHM	45 °
RBWS2620RHJ	45 °

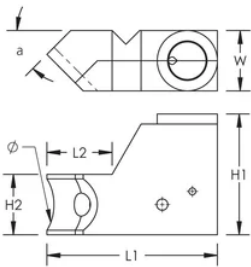
### ADDITIONAL PRODUCT DETAILS

RBWS2620 pouring basins require one RBW350 and one RBW664 pouring basin frame and one RBS5000 bolt retainer (sold separately).

Prior to installation, please read and understand all of the detailed instructions and safety notices provided in the nVent LENTON Cadweld Rebar Splicing System Instruction Manual.

Sizes not shown may be available by special order. Contact your nVent LENTON representative for more information.

### DIAGRAMS



### WARNING

nVent products shall be installed and used only as indicated in nVent's product instruction sheets and training materials. Instruction sheets are available at [www.nvent.com](http://www.nvent.com) and from your nVent customer service representative. Improper installation, misuse, misapplication or other failure to completely follow nVent's instructions and warnings may cause product malfunction, property damage, serious bodily injury and death and/or void your warranty.

**North America**

+1.800.753.9221

Option 1 – Customer Care

Option 2 – Technical

Support

**Europe**

Netherlands:

+31 800-0200135

France:

+33 800 901 793

**Europe**

Germany:

800 1890272

Other Countries:

+31 13 5835404

**APAC**

Shanghai:

+ 86 21 2412 1618/19

Sydney:

+61 2 9751 8500



Our powerful portfolio of brands:

**CADDY**

**ERICO**

**HOFFMAN**

**ILSCO**

**SCHROFF**

**TRACHTE**