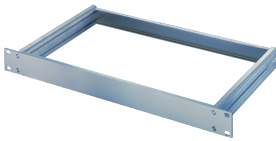


MultipacPRO 19" Chassis Basic Kit

Power Utilities

Such a kit enables a customer to configure the 3 different top / bottom covers.



CERTIFICATIONS



FEATURES

For non-standardized assemblies (1 ... 5 U) and standardized assemblies (1, 2 U) conforming to IEC 60297-3-105

Frame consists of two lateral parts and front/rear panel

Material: aluminium

Select further components (Accessories)

SPECIFICATIONS

Table 1/2

Catalog Number	Rack Height	Depth	Usable Width	Mounting	Complies With	EMC Shielding
20860-201	1 U	220 mm	403 mm	Rack	IEC 60297-3-100	No (Retrofittable)
20860-202	1 U	280 mm	403 mm	Rack	IEC 60297-3-100	No (Retrofittable)

CatalogNumber	Rack Height	Depth	Usable Width	Mounting	Complies With	EMC Shielding
20860-203	1 U	340 mm	403 mm	Rack	IEC 60297-3-100	No (Retrofittable)
20860-204	1 U	400 mm	4 mm	Rack	IEC 60297-3-100	No (Retrofittable)
20860-205	1 U	460 mm	4 mm	Rack	IEC 60297-3-100	No (Retrofittable)
20860-210	2 U	220 mm	403 mm	Rack	IEC 60297-3-100	No (Retrofittable)
20860-211	2 U	280 mm	403 mm	Rack	IEC 60297-3-100	No (Retrofittable)
20860-212	2 U	340 mm	403 mm	Rack	IEC 60297-3-100	No (Retrofittable)
20860-213	2 U	400 mm	4 mm	Rack	IEC 60297-3-100	No (Retrofittable)
20860-214	2 U	460 mm	4 mm	Rack	IEC 60297-3-100	No (Retrofittable)
20860-219	3 U	280 mm	403 mm	Rack	IEC 60297-3-100	No (Retrofittable)
20860-220	3 U	340 mm	403 mm	Rack	IEC 60297-3-100	No (Retrofittable)
20860-221	3 U	400 mm	403 mm	Rack	IEC 60297-3-100	No (Retrofittable)
20860-222	3 U	460 mm	403 mm	Rack	IEC 60297-3-100	No (Retrofittable)
20860-228	4 U	280 mm	403 mm	Rack	IEC 60297-3-100	No (Retrofittable)
20860-229	4 U	340 mm	403 mm	Rack	IEC 60297-3-100	No (Retrofittable)
20860-230	4 U	400 mm	403 mm	Rack	IEC 60297-3-100	No (Retrofittable)
20860-231	4 U	460 mm	403 mm	Rack	IEC 60297-3-100	No (Retrofittable)
20860-240	5 U	460 mm	403 mm	Rack	IEC 60297-3-100	No (Retrofittable)

Table 2/2

Catalog Number	Product Family	Product Type	Type	Certifications
----------------	----------------	--------------	------	----------------

20860-201	MultipacPRO	Subrack/Chassis	Configurable	RoHS
20860-202	MultipacPRO	Subrack/Chassis	Configurable	RoHS
20860-203	MultipacPRO	Subrack/Chassis	Configurable	RoHS
20860-204	MultipacPRO	Subrack/Chassis	Configurable	
20860-205	MultipacPRO	Subrack/Chassis	Configurable	
20860-210	MultipacPRO	Subrack/Chassis	Configurable	RoHS
20860-211	MultipacPRO	Subrack/Chassis	Configurable	RoHS
20860-212	MultipacPRO	Subrack/Chassis	Configurable	RoHS
20860-213	MultipacPRO	Subrack/Chassis	Configurable	
20860-214	MultipacPRO	Subrack/Chassis	Configurable	
20860-219	MultipacPRO	Subrack/Chassis	Configurable	RoHS
20860-220	MultipacPRO	Subrack/Chassis	Configurable	RoHS
20860-221	MultipacPRO	Subrack/Chassis	Configurable	RoHS
20860-222	MultipacPRO	Subrack/Chassis	Configurable	RoHS
20860-228	MultipacPRO	Subrack/Chassis	Configurable	RoHS
20860-229	MultipacPRO	Subrack/Chassis	Configurable	RoHS
20860-230	MultipacPRO	Subrack/Chassis	Configurable	RoHS
20860-231	MultipacPRO	Subrack/Chassis	Configurable	RoHS
20860-240	MultipacPRO	Subrack/Chassis	Configurable	RoHS

ADDITIONAL PRODUCT DETAILS

Please order mounting plate, cover and base plates, handles, telescopic slides separately.

Dimensions h = clear mounting height = H-8.1 mm, b = clear mounting width = 403 mm.

WARNING

nVent products shall be installed and used only as indicated in nVent's product instruction sheets and training materials. Instruction sheets are available at www.nvent.com and from your nVent customer service representative. Improper installation, misuse, misapplication or other failure to completely follow nVent's instructions and warnings may cause product malfunction, property damage, serious bodily injury and death and/or void your warranty.



Our powerful portfolio of brands:

CADDY ERICO HOFFMAN ILSCO SCHROFF TRACHTE