

T-Series Horizontal Sleeve, Side Fill



The side fill horizontal T-Series sleeve has vent holes located 90 degrees from the tap hole to facilitate side fill installations when the interferences of the structure will not allow top filling. Vent holes are added to horizontal sleeves to reduce air entrapment and help ensure proper filling of the sleeve.

FEATURES

Designed to connect horizontal reinforcing bars and angular reinforcing bars up to 45 degrees

Used to splice the same diameter bars

Works with saw cut, flame cut and sheared bars

Can be visually inspected after installation

Available with extended sleeve lengths

SPECIFICATIONS

Finish: Plain

Material: Steel

100% U.S. Domestic Content: Yes

Table 1/2

Catalog Number	Sleeve	Rebar Size, Metric	Rebar Size, US	Rebar Size, Canada	Diameter 1 (Ø1)	Diameter 2 (Ø2)
RBT6101HSA	Standard Length	20 mm	#6	20M	38 mm	25 mm
RBT7101HSA	Standard Length	22 mm	#7		41 mm	29 mm
RBT81011HSA	Extended Length	25 mm	#8	25M	48 mm	32 mm
RBT1091HSA	Standard Length	32 mm	#10		57 mm	41 mm

CatalogNumber	Sleeve	Rebar Size, Metric	Rebar Size, US	Rebar Size, Canada	Diameter 1(Ø1)	Diameter 2(Ø2)
RBT9101HSA	Standard Length	28 mm	#9	30M	54 mm	38 mm
RBT11101HSA	Standard Length	36 mm	#11	35M	64 mm	44 mm
RBT8101HSA	Standard Length	25 mm	#8	25M	48 mm	32 mm
RBT14101HSA	Standard Length	43 mm	#14	45M	76 mm	54 mm
RBT1891HSA	Standard Length	57 mm	#18	55M	95 mm	67 mm
RBT111011HSA	Extended Length	36 mm	#11	35M	64 mm	44 mm

Table 2/2

Catalog Number	Length 1 (L1)	Length 2 (L2)	Length 3 (L3)	Unit Weight	Package Quantity
RBT6101HSA	127 mm	64 mm	20mm	0.63 kg	30
RBT7101HSA	127 mm	64 mm	20mm	0.69 kg	36
RBT81011HSA	152 mm	76 mm	20mm	1.38 kg	16
RBT1091HSA	140 mm	70 mm	20mm	1.34 kg	16
RBT9101HSA	127 mm	64 mm	20mm	1.14 kg	25
RBT11101HSA	152 mm	76 mm	20mm	1.93 kg	16
RBT8101HSA	127 mm	64 mm	20mm	0.98 kg	25
RBT14101HSA	178 mm	89 mm	26mm	3.17 kg	9
RBT1891HSA	229 mm	114 mm	26mm	6.51 kg	4
RBT111011HSA	178 mm	89 mm	26mm	2.25 kg	12

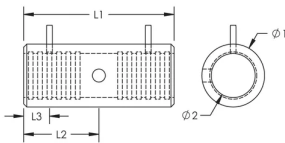
Designed to AASHTO;ABNT NBR 8548:1984;ACI 318 Type 1 (125% Specified Yield);ACI 318 Type 2 (Specified
Meet: Tensile);ACI 349;ACI 359;AS3600

ADDITIONAL PRODUCT DETAILS

Prior to installation, please read and understand all of the detailed instructions and safety notices provided in the nVent LENTON Cadweld Rebar Splicing System Instruction Manual.

Sizes not shown may be available by special order. Contact your nVent LENTON representative for more information.

DIAGRAMS



WARNING

nVent products shall be installed and used only as indicated in nVent's product instruction sheets and training materials. Instruction sheets are available at www.nvent.com and from your nVent customer service representative. Improper installation, misuse, misapplication or other failure to completely follow nVent's instructions and warnings may cause product malfunction, property damage, serious bodily injury and death and/or void your warranty.

North America

+1.800.753.9221
Option 1 – Customer Care
Option 2 – Technical
Support

Europe

Netherlands:
+31 800-0200135
France:
+33 800 901 793

Europe

Germany:
800 1890272
Other Countries:
+31 13 5835404

APAC

Shanghai:
+ 86 21 2412 1618/19
Sydney:
+61 2 9751 8500



Our powerful portfolio of brands:

CADDY ERICO HOFFMAN ILSCO SCHROFF TRACHTE