

# D16A Mechanical Anchor with Extension



The nVent LENTON D16A Mechanical Anchor with Extension provides a method of splicing and anchoring reinforcing bar in segmental concrete construction applications that have limited space or are severely congested. The large head significantly reduces required embedment lengths. The anchors are a combination of standard nVent LENTON Terminator D16 Mechanical Anchors and ELFM Female-to-Male Extensions.

Typically used in thin wall, wall/slab and beam/column applications, the D16A Mechanical Anchor with Extension easily attaches to the form panels using standard nVent LENTON accessories. When the form is stripped, the protected threaded end of the coupler is exposed. Simply remove the protective cap or accessory and install the subsequent nVent LENTON taper threaded dowel bar. This system eliminates hooked bar congestion, protruding dowels and the need to drill holes in expensive formwork.

## FEATURES

Reduces congestion

Utilizes standard nVent LENTON accessories

Head area exceeds 5x bar area (net 4x)

Components also sold separately

Available in customer specified lengths

## SPECIFICATIONS

**Finish:** Plain

**Material:** Steel

Table 1/2

Catalog Number	Rebar Size, Metric	Rebar Size, US	Rebar Size, Canada	Diameter 1 (Ø1)	Diameter 2 (Ø2)	Length 1 (L1)
EL25D16A125N	25 mm	#8	25M	35 mm	60 mm	125 mm
EL28D16A130N	28 mm	#9	30M	40 mm	65 mm	130 mm

CatalogNumber	Rebar Size, Metric	Rebar Size, US	Rebar Size, Canada	Diameter 1(Ø1)	Diameter 2(Ø2)	Length 1 (L1)
EL32D16A138N	32 mm	#10		45 mm	75 mm	138 mm

Table 2/2

Catalog Number	Length 2 (L2)	Bar Depth (BD)	Unit Weight	Package Quantity
EL25D16A125N	85 mm	40mm	1.3 kg	8
EL28D16A130N	88 mm	42mm	1.7 kg	10
EL32D16A138N	93 mm	45mm	2.4 kg	6

**Designed to Meet:** ACI 318;AS3600;ASTM A970

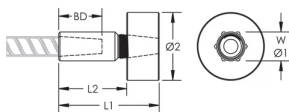
## ADDITIONAL PRODUCT DETAILS

Anchorage calculations such as concrete breakout strength and development lengths are the responsibility of the design professional.

Bar dimensions and weights listed may vary by region. Coupler sizes not shown may be available by special order. Contact your nVent LENTON representative for more information.

Thread does not need to be flush with end of nVent LENTON Terminator. Thread may be +/- 2 threads from backside of coupler.

## DIAGRAMS



## WARNING

nVent products shall be installed and used only as indicated in nVent's product instruction sheets and training materials. Instruction sheets are available at [www.nvent.com](http://www.nvent.com) and from your nVent customer service representative. Improper installation, misuse, misapplication or other failure to completely follow nVent's instructions and warnings may cause product malfunction, property damage, serious bodily injury and death and/or void your warranty.

#### North America

+1.800.753.9221

Option 1 – Customer Care

Option 2 – Technical

Support

#### Europe

Netherlands:

+31 800-0200135

France:

+33 800 901 793

#### Europe

Germany:

800 1890272

Other Countries:

+31 13 5835404

#### APAC

Shanghai:

+ 86 21 2412 1618/19

Sydney:

+61 2 9751 8500



Our powerful portfolio of brands:

**CADDY**

**ERICO**

**HOFFMAN**

**ILSCO**

**SCHROFF**

**TRACHTE**