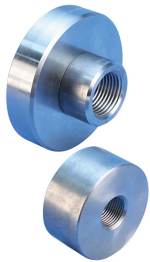


# D14 Mechanical Anchor for Cryogenic Applications



The nVent LENTON brand of cryogenic reinforcement splicing systems should be specified whenever cryogenic-grade reinforcing bar is used, or during normal operating or emergency conditions where the temperature falls below -20 °C (-4 °F). By combining the nVent LENTON tapered threaded couplers with state-of-the-art materials, we have developed one of the slimmest couplers on the market, while still maintaining top performance. Typical construction projects include LNG and LPG storage tanks.

## FEATURES

Replaces conventional hooked reinforcing bar

Simplifies reinforcing bar placement and lowers placing costs

Head area exceeds 10x bar area (net 9x)

Improved performance and reliability at cryogenic temperatures (-168 °C / -270 °F)

## SPECIFICATIONS

**Finish:** Plain

**Material:** Stainless Steel 431 (EN 1.4057)

Table 1/2

Catalog Number	Rebar Size, Metric	Rebar Size, US	Rebar Size, Canada	Diameter 1 (Ø1)	Diameter 2 (Ø2)	Length 1 (L1)
EL12D14CRN	12 mm	#4	10M	45 mm		19 mm
EL16D14CRN	16 mm	#5	15M	55 mm		24 mm
EL28D14CRN	28 mm	#9	30M	95 mm	80 mm	42 mm
EL20D14CRN	20 mm	#6	20M	65 mm		35 mm

CatalogNumber	Rebar Size, Metric	Rebar Size, US	Rebar Size, Canada	Diameter 1(Ø1)	Diameter 2(Ø2)	Length 1 (L1)
EL32D14CRN	32 mm	#10		105 mm	80 mm	46 mm
EL25D14CRN	25 mm	#8	25M	80 mm		40 mm

Table 2/2

Catalog Number	Length 2 (L2)	Unit Weight	Package Quantity
EL12D14CRN		0.21 kg	80
EL16D14CRN		0.46 kg	40
EL28D14CRN	20 mm	2.08 kg	8
EL20D14CRN		0.81 kg	20
EL32D14CRN	25 mm	2.33 kg	6
EL25D14CRN		1.57 kg	10

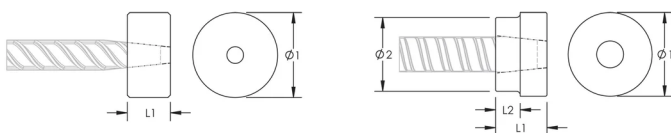
**Designed to Meet:** ACI 318;AS3600;ASTM A970;EN 14620-3

## ADDITIONAL PRODUCT DETAILS

Bar dimensions and weights listed may vary by region. Coupler sizes not shown may be available by special order. Contact your nVent LENTON representative for more information.

Thread does not need to be flush with end of nVent LENTON Terminator. Thread may be +/- 2 threads from backside of coupler.

## DIAGRAMS



## WARNING

nVent products shall be installed and used only as indicated in nVent's product instruction sheets and training materials. Instruction sheets are available at [www.nvent.com](http://www.nvent.com) and from your nVent customer service representative. Improper

installation, misuse, misapplication or other failure to completely follow nVent's instructions and warnings may cause product malfunction, property damage, serious bodily injury and death and/or void your warranty.

**North America**

+1.800.753.9221  
Option 1 – Customer Care  
Option 2 – Technical  
Support

**Europe**

Netherlands:  
+31 800-0200135  
France:  
+33 800 901 793

**Europe**

Germany:  
800 1890272  
Other Countries:  
+31 13 5835404

**APAC**

Shanghai:  
+ 86 21 2412 1618/19  
Sydney:  
+61 2 9751 8500



Our powerful portfolio of brands:

**CADDY   ERICO   HOFFMAN   ILSCO   SCHROFF   TRACHTE**