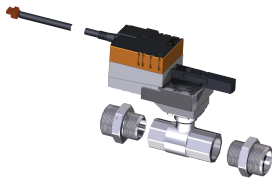


# RackChiller Rear Door Motorized Control Valve, Active and Passive

## Data Solutions

### CATALOG NUMBER

**23130-607**



This 2-way control valve enables the RackChiller Rear Door to modulate the coolant flow based on the cooling requirements. It is supplied with 24 VDC power directly by the RackChiller Rear Door controller.

### CERTIFICATIONS



### FEATURES

2-Way valve with pre-mounted electrical motor / actuator

24 VDC supplied directly by cooler controller

1" BSPT female thread, adapters for 1 1/4" BSPP included

PN16: upto 16 bar pressure

Low flow resistance with Kvs 16

### PRODUCT ATTRIBUTES

Product Type: Control Valve

Product Family: RackChiller

Net Weight: 1.746kg

## ADDITIONAL PRODUCT DETAILS

---

RackChiller Rear Door Controller required. This is included in the Active version, please use 23130-594 for Passive version.

For trouble-free operation it is recommended to use the water connection set and the optional accessories.

## WARNING

---

nVent products shall be installed and used only as indicated in nVent's product instruction sheets and training materials. Instruction sheets are available at [www.nvent.com](http://www.nvent.com) and from your nVent customer service representative. Improper installation, misuse, misapplication or other failure to completely follow nVent's instructions and warnings may cause product malfunction, property damage, serious bodily injury and death and/or void your warranty.



Our powerful portfolio of brands:

**CADDY   ERICO   HOFFMAN   ILSCO   SCHROFF   TRACHTE**