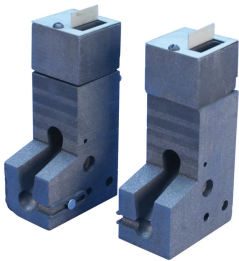


# Cable to Web of Rail Replacement Mold Pair, Signal, 85-141 lb T-Rail, 1" Tab Bond Terminal Style, 10 mm<sup>2</sup> Stranded

## CATALOG NUMBER

**SBB200R**



## FEATURES

Replacement mold pair designed for the installation of track circuits and jumper bonds to the neutral axis

Sold in pairs

## PRODUCT ATTRIBUTES

Material: Graphite

Rail Type: 85 lb to 141 lb T-Rail Sections

Bond Terminal Style: 1" Tab

Conductor Size: 10 mm<sup>2</sup> Stranded

Conductor Outer Diameter, Nominal: 4.12mm

Welder Style: TB5;T21

Bond Clips Included: No

Mold Only: Yes

Welding Material: SB25, Sold Separately

Conductor Sleeve: SBS10, Sold Separately

Bond Clip: B33810

Hammer Die: SBD12, Sold Separately

## WARNING

---

nVent products shall be installed and used only as indicated in nVent's product instruction sheets and training materials. Instruction sheets are available at [www.nvent.com](http://www.nvent.com) and from your nVent customer service representative. Improper installation, misuse, misapplication or other failure to completely follow nVent's instructions and warnings may cause product malfunction, property damage, serious bodily injury and death and/or void your warranty.

### North America

+1.800.753.9221

Option 1 – Customer Care

Option 2 – Technical

Support

### Europe

Netherlands:

+31 800-0200135

France:

+33 800 901 793

### Europe

Germany:

800 1890272

Other Countries:

+31 13 5835404

### APAC

Shanghai:

+ 86 21 2412 1618/19

Sydney:

+61 2 9751 8500



Our powerful portfolio of brands:

**CADDY**

**ERICO**

**HOFFMAN**

**ILSCO**

**SCHROFF**

**TRACHTE**