

# B162 Earthpoint, Two Stud



## FEATURES

Long-lasting design

Low ground resistance and impedance

Superior electrical conductivity and resistance to corrosion

Electrically and mechanically robust and reliable

Easy to install as a Prefabricated Earthbridge once nVent ERICO Cadweld welded to a piece of conductor

## SPECIFICATIONS

Table 1/2

Catalog Number	Material	Width 1 (W1)	Width 2 (W2)	Depth (D)	Height (H)	Diameter (Ø)
B162Y1	Bronze	44.5 mm	82.55 mm	41.28mm	76.2 mm	6.2 mm
B162Y2	Bronze	44.5 mm	82.55 mm	41.28mm	76.2 mm	7.9 mm
B162Y3	Bronze	44.5 mm	82.55 mm	41.28mm	76.2 mm	9.1 mm
B162Y4	Bronze	44.5 mm	82.55 mm	41.28mm	76.2 mm	10.5 mm
B162Y5	Bronze	44.5 mm	82.55 mm	41.28mm	76.2 mm	12.3 mm
B1622Q	Brass	44.45 mm	82.55 mm	41.28mm	76.2 mm	13.46 mm

CatalogNumber	Material	Width 1 (W1)	Width 2 (W2)	Depth (D)	Height (H)	Diameter (Ø)
B162Y6	Bronze	44.5 mm	82.55 mm	41.28mm	76.2 mm	14.6 mm
B1629G	Bronze	44.5 mm	82.6 mm	41.28mm	76.2 mm	16.3 mm
B162Y8	Bronze	44.5 mm	82.6 mm	41.28mm	76.2 mm	17.8 mm

Table 2/2

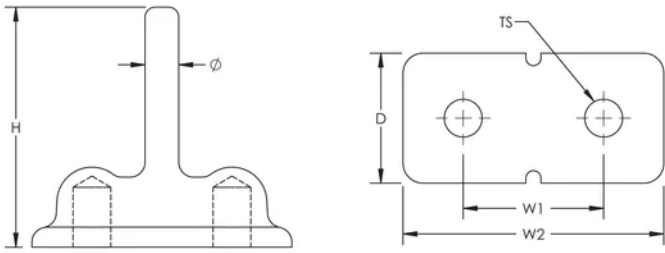
Catalog Number	Thread Size (TS)
B162Y1	M12
B162Y2	M12
B162Y3	M12
B162Y4	M12
B162Y5	M12
B1622Q	1/2" UNC
B162Y6	M12
B1629G	M12
B162Y8	M12

## ADDITIONAL PRODUCT DETAILS

---

Assemblies require conductors and nVent ERICO Cadweld connections, which must be ordered separately.

## DIAGRAMS



## WARNING

nVent products shall be installed and used only as indicated in nVent's product instruction sheets and training materials. Instruction sheets are available at [www.nvent.com](http://www.nvent.com) and from your nVent customer service representative. Improper installation, misuse, misapplication or other failure to completely follow nVent's instructions and warnings may cause product malfunction, property damage, serious bodily injury and death and/or void your warranty.

**⚠** WARNING: This product can expose you to chemicals including lead, which is known to the State of California to cause cancer and birth defects or other reproductive harm. For more information go to [www.P65Warnings.ca.gov](http://www.P65Warnings.ca.gov).

### North America

+1.800.753.9221  
Option 1 – Customer Care  
Option 2 – Technical  
Support

### Europe

Netherlands:  
+31 800-0200135  
France:  
+33 800 901 793

### Europe

Germany:  
800 1890272  
Other Countries:  
+31 13 5835404

### APAC

Shanghai:  
+ 86 21 2412 1618/19  
Sydney:  
+61 2 9751 8500



Our powerful portfolio of brands:

**CADDY ERICO HOFFMAN ILSCO SCHROFF TRACHTE**