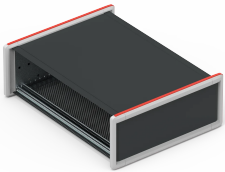


RatiopacPRO Style, Front and Rear Trim, Screwless Front



The versatile RatiopacPRO Style desktop case features a protective frame design, rubber strips, and various configuration options.

The Front and Rear Trims with Top & Bottom Rubber Strip option provides connector safeguarding and integrated stacking capability. The Circulated Rubber Strip design protects corner and is ideal for smaller mobile cases. For larger equipment, the Front Handle offers convenient carrying and rear connector protection.

Designed for 19" components with guide rails or proprietary components with a mounting plate, RatiopacPRO Style caters to your specific requirements.

FEATURES

Desktop case with protective frame design and rubber strips on the top and bottom for a secure stand and with integrated stacking function

Case for 19" components (guide rails) or proprietary components (mounting plate).

To establish EMC-shielding, additional components need to be added to the enclosure.

Front side for front panel mounting without screws and rear side prepared for standard front panel mounting.

Perforated bottom cover for air-cooling

No visible screws; cladding parts removable without tools

For board depth 160 mm, 220 mm, 280 mm and 340 mm (depending on case depth)

SPECIFICATIONS

- Product Type:** Case
- Type:** Case for Individual Electronic Components
- Product Family:** RatiopacPRO Style

Table 1/3

Catalog Number	Rack Height	Rack Width	Depth	Package Quantity	Usable Height	Usable Width
24582-626	6U	42HP	414mm	1	245.7mm	213.9mm

CatalogNumber	Rack Height	Rack Width	Depth	Package Quantity	Usable Height	Usable Width
24582-634	6U	63HP	294mm	1	245.7mm	320.6mm
24582-635	6U	63HP	354mm	1	245.7mm	320.6mm
24582-636	6U	63HP	414mm	1	245.7mm	320.6mm
24582-644	6U	84HP	294mm	1	245.7mm	427.3mm
24582-645	6U	84HP	354mm	1	245.7mm	427.3mm
24582-646	6U	84HP	414mm	1	245.7mm	427.3mm
24582-647	6U	84HP	474mm	1	245.7mm	427.3mm
24582-214	2U	28HP	294mm	1	67.9mm	142.8mm
24582-215	2U	28HP	354mm	1	67.9mm	142.8mm
24582-224	2U	42HP	294mm	1	67.9mm	213.9mm
24582-225	2U	42HP	354mm	1	67.9mm	213.9mm
24582-226	2U	42HP	414mm	1	67.9mm	213.9mm
24582-234	2U	63HP	294mm	1	67.9mm	320.6mm
24582-235	2U	63HP	354mm	1	67.9mm	320.6mm
24582-236	2U	63HP	414mm	1	67.9mm	320.6mm
24582-244	2U	84HP	294mm	1	67.9mm	427.3mm
24582-245	2U	84HP	354mm	1	67.9mm	427.3mm
24582-246	2U	84HP	414mm	1	67.9mm	427.3mm

CatalogNumber	Rack Height	Rack Width	Depth	Package Quantity	Usable Height	Usable Width
24582-247	2U	84HP	474mm	1	67.9mm	427.3mm
24582-314	3U	28HP	294mm	1	112.3mm	142.8mm
24582-315	3U	28HP	354mm	1	112.3mm	142.8mm
24582-324	3U	42HP	294mm	1	112.3mm	213.9mm
24582-325	3U	42HP	354mm	1	112.3mm	213.9mm
24582-326	3U	42HP	414mm	1	112.3mm	213.9mm
24582-334	3U	63HP	294mm	1	112.3mm	320.6mm
24582-335	3U	63HP	354mm	1	112.3mm	320.6mm
24582-336	3U	63HP	414mm	1	112.3mm	320.6mm
24582-344	3U	84HP	294mm	1	112.3mm	427.3mm
24582-345	3U	84HP	354mm	1	112.3mm	427.3mm
24582-346	3U	84HP	414mm	1	112.3mm	427.3mm
24582-347	3U	84HP	474mm	1	112.3mm	427.3mm
24582-424	4U	42HP	294mm	1	156.8mm	213.9mm
24582-425	4U	42HP	354mm	1	156.8mm	213.9mm
24582-426	4U	42HP	414mm	1	156.8mm	213.9mm
24582-434	4U	63HP	294mm	1	156.8mm	320.6mm
24582-435	4U	63HP	354mm	1	156.8mm	320.6mm

CatalogNumber	Rack Height	Rack Width	Depth	Package Quantity	Usable Height	Usable Width
24582-436	4U	63HP	414mm	1	156.8mm	320.6mm
24582-444	4U	84HP	294mm	1	156.8mm	427.3mm
24582-445	4U	84HP	354mm	1	156.8mm	427.3mm
24582-446	4U	84HP	414mm	1	156.8mm	427.3mm
24582-447	4U	84HP	474mm	1	156.8mm	427.3mm
24582-624	6U	42HP	294mm	1	245.7mm	213.9mm
24582-625	6U	42HP	354mm	1	245.7mm	213.9mm

Table 2/3

Catalog Number	Front Frame Construction	Cooling Option	Complies With	EMC Shielding	Finish	Height
24582-626	Side Trim, Horizontal Rails	Yes	IEC 60297-3-101, IEC 60297-3-102, IEEE 1101.1, IEEE 1101.10, IEEE 1101.11	No (Retrofittable)	Anodized, Passivated, Powder Coated	290mm
24582-634	Side Trim, Horizontal Rails	Yes	IEC 60297-3-101, IEC 60297-3-102, IEEE 1101.1, IEEE 1101.10, IEEE 1101.11	No (Retrofittable)	Anodized, Passivated, Powder Coated	290mm
24582-635	Side Trim, Horizontal Rails	Yes	IEC 60297-3-101, IEC 60297-3-102, IEEE 1101.1, IEEE 1101.10, IEEE 1101.11	No (Retrofittable)	Anodized, Passivated, Powder Coated	290mm
24582-636	Side Trim, Horizontal Rails	Yes	IEC 60297-3-101, IEC 60297-3-102, IEEE 1101.1, IEEE 1101.10, IEEE 1101.11	No (Retrofittable)	Anodized, Passivated, Powder Coated	290mm

CatalogNumber	Front Frame Construction	Cooling Option	Complies With	EMC Shielding	Finish	Height
24582-644	Side Trim, Horizontal Rails	Yes	IEC 60297-3-101, IEC 60297-3-102, IEEE 1101.1, IEEE 1101.10, IEEE 1101.11	No (Retrofittable)	Anodized, Passivated, Powder Coated	290mm
24582-645	Side Trim, Horizontal Rails	Yes	IEC 60297-3-101, IEC 60297-3-102, IEEE 1101.1, IEEE 1101.10, IEEE 1101.11	No (Retrofittable)	Anodized, Passivated, Powder Coated	290mm
24582-646	Side Trim, Horizontal Rails	Yes	IEC 60297-3-101, IEC 60297-3-102, IEEE 1101.1, IEEE 1101.10, IEEE 1101.11	No (Retrofittable)	Anodized, Passivated, Powder Coated	290mm
24582-647	Side Trim, Horizontal Rails	Yes	IEC 60297-3-101, IEC 60297-3-102, IEEE 1101.1, IEEE 1101.10, IEEE 1101.11	No (Retrofittable)	Anodized, Passivated, Powder Coated	290mm
24582-214	Side Trim, Horizontal Rails	Yes	IEC 60297-3-101, IEC 60297-3-102, IEEE 1101.1, IEEE 1101.10, IEEE 1101.11	No (Retrofittable)	Anodized, Passivated, Powder Coated	112mm
24582-215	Side Trim, Horizontal Rails	Yes	IEC 60297-3-101, IEC 60297-3-102, IEEE 1101.1, IEEE 1101.10, IEEE 1101.11	No (Retrofittable)	Anodized, Passivated, Powder Coated	112mm
24582-224	Side Trim, Horizontal Rails	Yes	IEC 60297-3-101, IEC 60297-3-102, IEEE 1101.1, IEEE 1101.10, IEEE 1101.11	No (Retrofittable)	Anodized, Passivated, Powder Coated	112mm

CatalogNumber	Front Frame Construction	Cooling Option	Complies With	EMC Shielding	Finish	Height
24582-225	Side Trim, Horizontal Rails	Yes	IEC 60297-3-101, IEC 60297-3-102, IEEE 1101.1, IEEE 1101.10, IEEE 1101.11	No (Retrofittable)	Anodized, Passivated, Powder Coated	112mm
24582-226	Side Trim, Horizontal Rails	Yes	IEC 60297-3-101, IEC 60297-3-102, IEEE 1101.1, IEEE 1101.10, IEEE 1101.11	No (Retrofittable)	Anodized, Passivated, Powder Coated	112mm
24582-234	Side Trim, Horizontal Rails	Yes	IEC 60297-3-101, IEC 60297-3-102, IEEE 1101.1, IEEE 1101.10, IEEE 1101.11	No (Retrofittable)	Anodized, Passivated, Powder Coated	112mm
24582-235	Side Trim, Horizontal Rails	Yes	IEC 60297-3-101, IEC 60297-3-102, IEEE 1101.1, IEEE 1101.10, IEEE 1101.11	No (Retrofittable)	Anodized, Passivated, Powder Coated	112mm
24582-236	Side Trim, Horizontal Rails	Yes	IEC 60297-3-101, IEC 60297-3-102, IEEE 1101.1, IEEE 1101.10, IEEE 1101.11	No (Retrofittable)	Anodized, Passivated, Powder Coated	112mm
24582-244	Side Trim, Horizontal Rails	Yes	IEC 60297-3-101, IEC 60297-3-102, IEEE 1101.1, IEEE 1101.10, IEEE 1101.11	No (Retrofittable)	Anodized, Passivated, Powder Coated	112mm
24582-245	Side Trim, Horizontal Rails	Yes	IEC 60297-3-101, IEC 60297-3-102, IEEE 1101.1, IEEE 1101.10, IEEE 1101.11	No (Retrofittable)	Anodized, Passivated, Powder Coated	112mm

CatalogNumber	Front Frame Construction	Cooling Option	Complies With	EMC Shielding	Finish	Height
24582-246	Side Trim, Horizontal Rails	Yes	IEC 60297-3-101, IEC 60297-3-102, IEEE 1101.1, IEEE 1101.10, IEEE 1101.11	No (Retrofittable)	Anodized, Passivated, Powder Coated	112mm
24582-247	Side Trim, Horizontal Rails	Yes	IEC 60297-3-101, IEC 60297-3-102, IEEE 1101.1, IEEE 1101.10, IEEE 1101.11	No (Retrofittable)	Anodized, Passivated, Powder Coated	112mm
24582-314	Side Trim, Horizontal Rails	Yes	IEC 60297-3-101, IEC 60297-3-102, IEEE 1101.1, IEEE 1101.10, IEEE 1101.11	No (Retrofittable)	Anodized, Passivated, Powder Coated	157mm
24582-315	Side Trim, Horizontal Rails	Yes	IEC 60297-3-101, IEC 60297-3-102, IEEE 1101.1, IEEE 1101.10, IEEE 1101.11	No (Retrofittable)	Anodized, Passivated, Powder Coated	157mm
24582-324	Side Trim, Horizontal Rails	Yes	IEC 60297-3-101, IEC 60297-3-102, IEEE 1101.1, IEEE 1101.10, IEEE 1101.11	No (Retrofittable)	Anodized, Passivated, Powder Coated	157mm
24582-325	Side Trim, Horizontal Rails	Yes	IEC 60297-3-101, IEC 60297-3-102, IEEE 1101.1, IEEE 1101.10, IEEE 1101.11	No (Retrofittable)	Anodized, Passivated, Powder Coated	157mm
24582-326	Side Trim, Horizontal Rails	Yes	IEC 60297-3-101, IEC 60297-3-102, IEEE 1101.1, IEEE 1101.10, IEEE 1101.11	No (Retrofittable)	Anodized, Passivated, Powder Coated	157mm

CatalogNumber	Front Frame Construction	Cooling Option	Complies With	EMC Shielding	Finish	Height
24582-334	Side Trim, Horizontal Rails	Yes	IEC 60297-3-101, IEC 60297-3-102, IEEE 1101.1, IEEE 1101.10, IEEE 1101.11	No (Retrofittable)	Anodized, Passivated, Powder Coated	157mm
24582-335	Side Trim, Horizontal Rails	Yes	IEC 60297-3-101, IEC 60297-3-102, IEEE 1101.1, IEEE 1101.10, IEEE 1101.11	No (Retrofittable)	Anodized, Passivated, Powder Coated	157mm
24582-336	Side Trim, Horizontal Rails	Yes	IEC 60297-3-101, IEC 60297-3-102, IEEE 1101.1, IEEE 1101.10, IEEE 1101.11	No (Retrofittable)	Anodized, Passivated, Powder Coated	157mm
24582-344	Side Trim, Horizontal Rails	Yes	IEC 60297-3-101, IEC 60297-3-102, IEEE 1101.1, IEEE 1101.10, IEEE 1101.11	No (Retrofittable)	Anodized, Passivated, Powder Coated	157mm
24582-345	Side Trim, Horizontal Rails	Yes	IEC 60297-3-101, IEC 60297-3-102, IEEE 1101.1, IEEE 1101.10, IEEE 1101.11	No (Retrofittable)	Anodized, Passivated, Powder Coated	157mm
24582-346	Side Trim, Horizontal Rails	Yes	IEC 60297-3-101, IEC 60297-3-102, IEEE 1101.1, IEEE 1101.10, IEEE 1101.11	No (Retrofittable)	Anodized, Passivated, Powder Coated	157mm
24582-347	Side Trim, Horizontal Rails	Yes	IEC 60297-3-101, IEC 60297-3-102, IEEE 1101.1, IEEE 1101.10, IEEE 1101.11	No (Retrofittable)	Anodized, Passivated, Powder Coated	157mm

CatalogNumber	Front Frame Construction	Cooling Option	Complies With	EMC Shielding	Finish	Height
24582-424	Side Trim, Horizontal Rails	Yes	IEC 60297-3-101, IEC 60297-3-102, IEEE 1101.1, IEEE 1101.10, IEEE 1101.11	No (Retrofittable)	Anodized, Passivated, Powder Coated	201mm
24582-425	Side Trim, Horizontal Rails	Yes	IEC 60297-3-101, IEC 60297-3-102, IEEE 1101.1, IEEE 1101.10, IEEE 1101.11	No (Retrofittable)	Anodized, Passivated, Powder Coated	201mm
24582-426	Side Trim, Horizontal Rails	Yes	IEC 60297-3-101, IEC 60297-3-102, IEEE 1101.1, IEEE 1101.10, IEEE 1101.11	No (Retrofittable)	Anodized, Passivated, Powder Coated	201mm
24582-434	Side Trim, Horizontal Rails	Yes	IEC 60297-3-101, IEC 60297-3-102, IEEE 1101.1, IEEE 1101.10, IEEE 1101.11	No (Retrofittable)	Anodized, Passivated, Powder Coated	201mm
24582-435	Side Trim, Horizontal Rails	Yes	IEC 60297-3-101, IEC 60297-3-102, IEEE 1101.1, IEEE 1101.10, IEEE 1101.11	No (Retrofittable)	Anodized, Passivated, Powder Coated	201mm
24582-436	Side Trim, Horizontal Rails	Yes	IEC 60297-3-101, IEC 60297-3-102, IEEE 1101.1, IEEE 1101.10, IEEE 1101.11	No (Retrofittable)	Anodized, Passivated, Powder Coated	201mm
24582-444	Side Trim, Horizontal Rails	Yes	IEC 60297-3-101, IEC 60297-3-102, IEEE 1101.1, IEEE 1101.10, IEEE 1101.11	No (Retrofittable)	Anodized, Passivated, Powder Coated	201mm

CatalogNumber	Front Frame Construction	Cooling Option	Complies With	EMC Shielding	Finish	Height
24582-445	Side Trim, Horizontal Rails	Yes	IEC 60297-3-101, IEC 60297-3-102, IEEE 1101.1, IEEE 1101.10, IEEE 1101.11	No (Retrofittable)	Anodized, Passivated, Powder Coated	201mm
24582-446	Side Trim, Horizontal Rails	Yes	IEC 60297-3-101, IEC 60297-3-102, IEEE 1101.1, IEEE 1101.10, IEEE 1101.11	No (Retrofittable)	Anodized, Passivated, Powder Coated	201mm
24582-447	Side Trim, Horizontal Rails	Yes	IEC 60297-3-101, IEC 60297-3-102, IEEE 1101.1, IEEE 1101.10, IEEE 1101.11	No (Retrofittable)	Anodized, Passivated, Powder Coated	201mm
24582-624	Side Trim, Horizontal Rails	Yes	IEC 60297-3-101, IEC 60297-3-102, IEEE 1101.1, IEEE 1101.10, IEEE 1101.11	No (Retrofittable)	Anodized, Passivated, Powder Coated	290mm
24582-625	Side Trim, Horizontal Rails	Yes	IEC 60297-3-101, IEC 60297-3-102, IEEE 1101.1, IEEE 1101.10, IEEE 1101.11	No (Retrofittable)	Anodized, Passivated, Powder Coated	290mm

Table 3/3

Catalog Number	Material	Protection Rating	Static Load	Width	Quick Ship
24582-626	Aluminum	IP30	25kg	247.5mm	No
24582-634	Aluminum	IP30	25kg	354.2mm	No
24582-635	Aluminum	IP30	25kg	354.2mm	No
24582-636	Aluminum	IP30	25kg	354.2mm	No
24582-644	Aluminum	IP30	25kg	460.9mm	No

Catalog Number	Material	Protection Rating	Static Load	Width	Quick Ship
24582-645	Aluminum	IP30	25kg	460.9mm	No
24582-646	Aluminum	IP30	25kg	460.9mm	No
24582-647	Aluminum	IP30	25kg	460.9mm	No
24582-214	Aluminum	IP30	25kg	176.4mm	No
24582-215	Aluminum	IP30	25kg	176.4mm	No
24582-224	Aluminum	IP30	25kg	247.5mm	No
24582-225	Aluminum	IP30	25kg	247.5mm	No
24582-226	Aluminum	IP30	25kg	247.5mm	No
24582-234	Aluminum	IP30	25kg	354.2mm	No
24582-235	Aluminum	IP30	25kg	354.2mm	No
24582-236	Aluminum	IP30	25kg	354.2mm	No
24582-244	Aluminum	IP30	25kg	460.9mm	No
24582-245	Aluminum	IP30	25kg	460.9mm	No
24582-246	Aluminum	IP30	25kg	460.9mm	No
24582-247	Aluminum	IP30	25kg	460.9mm	No
24582-314	Aluminum	IP30	25kg	176.4mm	No
24582-315	Aluminum	IP30	25kg	176.4mm	No
24582-324	Aluminum	IP30	25kg	247.5mm	No

Catalog Number	Material	Protection Rating	Static Load	Width	Quick Ship
24582-325	Aluminum	IP30	25kg	247.5mm	No
24582-326	Aluminum	IP30	25kg	247.5mm	No
24582-334	Aluminum	IP30	25kg	354.2mm	No
24582-335	Aluminum	IP30	25kg	354.2mm	No
24582-336	Aluminum	IP30	25kg	354.2mm	No
24582-344	Aluminum	IP30	25kg	460.9mm	No
24582-345	Aluminum	IP30	25kg	460.9mm	No
24582-346	Aluminum	IP30	25kg	460.9mm	No
24582-347	Aluminum	IP30	25kg	460.9mm	No
24582-424	Aluminum	IP30	25kg	247.5mm	No
24582-425	Aluminum	IP30	25kg	247.5mm	No
24582-426	Aluminum	IP30	25kg	247.5mm	No
24582-434	Aluminum	IP30	25kg	354.2mm	No
24582-435	Aluminum	IP30	25kg	354.2mm	No
24582-436	Aluminum	IP30	25kg	354.2mm	No
24582-444	Aluminum	IP30	25kg	460.9mm	No
24582-445	Aluminum	IP30	25kg	460.9mm	No
24582-446	Aluminum	IP30	25kg	460.9mm	No

Catalog Number	Material	Protection Rating	Static Load	Width	Quick Ship
24582-447	Aluminum	IP30	25kg	460.9mm	No
24582-624	Aluminum	IP30	25kg	247.5mm	No
24582-625	Aluminum	IP30	25kg	247.5mm	No

ADDITIONAL PRODUCT DETAILS

For custom configurations (colors, sizes, etc.), please visit our online configurator (<https://configurators.schroff.biz/ratiopacpro-style>).

Modification service for customer specific versions on request (special colours, sizes, cut-outs, etc.).

Assembly service from lotsize 1.

WARNING

nVent products shall be installed and used only as indicated in nVent's product instruction sheets and training materials. Instruction sheets are available at www.nvent.com and from your nVent customer service representative. Improper installation, misuse, misapplication or other failure to completely follow nVent's instructions and warnings may cause product malfunction, property damage, serious bodily injury and death and/or void your warranty.

North America

All locations
+1.763.422.2661
Chat with us:
nvent.com/schroff

Europe

Straubenhardt, Germany
+49.7082.794.0
Betschdorf, France
+33.3.88.90.64.90
Warsaw, Poland
+48.22.209.98.35
Assago, Italy
+39.02.932.7141
Chat with us:
nvent.com/schroff

Asia

Shanghai, China
+86.21.2412.6943
Qingdao, China
+86.532.8771.6101
Singapore
+65.6768.5800
Shin-Yokohama, Japan
+81.45.476.0271
Chat with us:
nvent.com/schroff

Middle East & India

Dubai, United Arab Emirates
+971.4.378.1700
Bangalore, India
+91.80.6715.2001
Istanbul, Turkey
+90.216.250.7374
Chat with us:
nvent.com/schroff



Our powerful portfolio of brands:

CADDY ERICO HOFFMAN ILSCO SCHROFF TRACHTE