

Bottom Support Clamp, Standard



The standard bottom support clamp is placed below the lower end alignment fitting on vertical installations. The clamp grips onto the reinforcing steel bar, helps locate the end alignment fitting and supports the pouring basin.

FEATURES

Easy to install and adjust

Fits multiple reinforcing steel bar sizes

SPECIFICATIONS

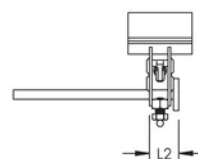
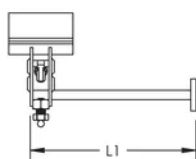
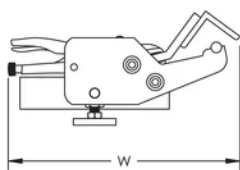
Table 1/1

Catalog Number	Material	Length 1 (L1)	Length 2 (L2)	Width (W)
RBM2960	Steel	197 mm	35 mm	276 mm

ADDITIONAL PRODUCT DETAILS

Prior to installation, please read and understand all of the detailed instructions and safety notices provided in the nVent LENTON Cadweld Rebar Splicing System Instruction Manual.

DIAGRAMS



WARNING

nVent products shall be installed and used only as indicated in nVent's product instruction sheets and training materials. Instruction sheets are available at www.nvent.com and from your nVent customer service representative. Improper installation, misuse, misapplication or other failure to completely follow nVent's instructions and warnings may cause product malfunction, property damage, serious bodily injury and death and/or void your warranty.

North America

+1.800.753.9221
Option 1 – Customer Care
Option 2 – Technical
Support

Europe

Netherlands:
+31 800-0200135
France:
+33 800 901 793

Europe

Germany:
800 1890272
Other Countries:
+31 13 5835404

APAC

Shanghai:
+ 86 21 2412 1618/19
Sydney:
+61 2 9751 8500



Our powerful portfolio of brands:

CADDY ERICO HOFFMAN ILSCO SCHROFF TRACHTE