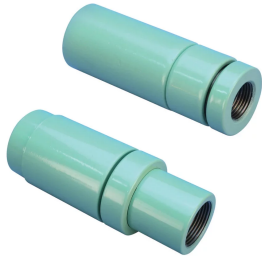


P9 Position Transition Coupler, Coated



Coated reinforcing bar is used in place of plain reinforcing bars to protect against corrosion. Typical applications include bridges, parking structures, pavement, marine structures and repair work. nVent LENTON couplers and mechanical anchors are available in multiple coatings to meet specific job requirements.

FEATURES

Used to splice different diameter bars

Designed to splice two curved, bent or straight bars, when neither bar can be rotated and where the ongoing bar is free to move in its axial direction

SPECIFICATIONS

Finish Standard:	ASTM® A775/A775M and AASHTO M284
Finish:	Epoxy Coated
Material:	Steel
100% U.S. Domestic Content:	Yes

Table 1/2

Catalog Number	Rebar Size, Metric	Rebar Size, US	Rebar Size, Canada	Diameter (Ø)	Length 1 (L1)	Length 2 (L2)
EL2825P9ES	28 mm, 25 mm	#9, #8	30M, 25M	64 mm	129 mm	144 mm
EL3225P9ES	32 mm, 25 mm	#10, #8		64 mm	135 mm	151 mm
EL3228P9ES	32 mm, 28 mm	#10, #9		64 mm	135 mm	151 mm
EL3628P9ES	36 mm, 28 mm	#11, #9	35M, 30M	64 mm	145 mm	160 mm
EL3632P9ES	36 mm, 32 mm	#11, #10		64 mm	145 mm	160 mm

CatalogNumber	Rebar Size, Metric	Rebar Size, US	Rebar Size, Canada	Diameter (Ø)	Length 1 (L1)	Length 2 (L2)
EL43T36P9ES	43 mm, 36 mm	#14, #11	45M, 35M	76 mm	224 mm	245 mm
EL57T43TP9ES	57 mm, 43 mm	#18, #14	55M, 45M	102 mm	256 mm	280 mm

Table 2/2

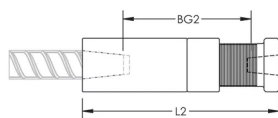
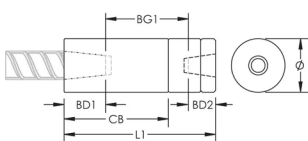
Catalog Number	Bar Depth 1 (BD1)	Bar Depth 2 (BD2)	Bar Gap 1 (BG1)	Bar Gap 2 (BG2)	Coupler Body (CB)	Unit Weight
EL2825P9ES	38mm	35mm	56mm	72mm	90mm	2.77 kg
EL3225P9ES	40mm	35mm	60mm	76mm	97mm	2.86 kg
EL3228P9ES	40mm	38mm	57mm	73mm	97mm	2.82 kg
EL3628P9ES	43mm	38mm	65mm	80mm	106mm	3 kg
EL3632P9ES	43mm	40mm	62mm	77mm	106mm	2.91 kg
EL43T36P9ES	56mm	43mm	125mm	146mm	127mm	5.91 kg
EL57T43TP9ES	71mm	56mm	128mm	153mm	152mm	12 kg

Designed to Meet: AASHTO;ABNT NBR 8548:1984;ACI 318 Type 1 (125% Specified Yield);ACI 318 Type 2 (Specified Tensile);ACI 349;ACI 359;AS3600

ADDITIONAL PRODUCT DETAILS

Bar dimensions and weights listed may vary by region. Coupler sizes not shown may be available by special order. Contact your nVent LENTON representative for more information.

DIAGRAMS



WARNING

nVent products shall be installed and used only as indicated in nVent's product instruction sheets and training materials. Instruction sheets are available at www.nvent.com and from your nVent customer service representative. Improper installation, misuse, misapplication or other failure to completely follow nVent's instructions and warnings may cause product malfunction, property damage, serious bodily injury and death and/or void your warranty.

North America

+1.800.753.9221
Option 1 – Customer Care
Option 2 – Technical
Support

Europe

Netherlands:
+31 800-0200135
France:
+33 800 901 793

Europe

Germany:
800 1890272
Other Countries:
+31 13 5835404

APAC

Shanghai:
+ 86 21 2412 1618/19
Sydney:
+61 2 9751 8500



Our powerful portfolio of brands:

CADDY ERICO HOFFMAN ILSCO SCHROFF TRACHTE