

nVent LENTON Quick Wedge Mechanical Lap Coupler, Plain, Pin Included



The nVent LENTON Quick Wedge splice consists of an oval-shaped steel sleeve and a wedge pin. The sleeve is positioned around two very short overlapping steel bars. The wedge pin is inserted into a handheld hydraulic pin-driver and positioned on the sleeve. The pin is then driven through the pre-drilled hole in the sleeve and between the bars to complete the connection.

FEATURES

Short reinforcing bar overlap significantly reduces concrete removal in retrofit applications

Eliminates the need to custom cut and fit rebar to precise measurements

Quick installations result in accelerated job scheduling

Simple to use with only minimal training required

Splice offers quick visual inspection

Each package contains couplers, wedge pins and a spare grommet

SPECIFICATIONS

Finish: Plain

Material: Steel

Table 1/2

Catalog Number	Packaging	Rebar Size, Metric	Rebar Size, US	Rebar Size, Canada	Length (L)	Width (W)
ML4	Standard	12 mm	#4	10M	48mm	42 mm
ML5	Standard	16 mm	#5	15M	57mm	49 mm
ML5PKG500	Bulk	16 mm	#5	15M	57mm	49 mm

CatalogNumber	Packaging	Rebar Size, Metric	Rebar Size, US	Rebar Size, Canada	Length (L)	Width (W)
ML6	Standard	20 mm	#6	20M	70mm	60 mm

Table 2/2

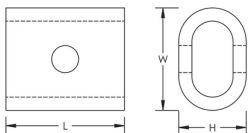
Catalog Number	Height (H)	Unit Weight
ML4	27 mm	0.23 kg
ML5	33 mm	0.36 kg
ML5PKG500	33 mm	0.36 kg
ML6	40 mm	0.64 kg

Designed to Meet: AASHTO;ACI 318 Type 1 (125% Specified Yield)

ADDITIONAL PRODUCT DETAILS

Prior to installation, please read and understand the detailed instructions and safety notices provided in the nVent LENTON Quick Wedge Operator's Manual.

DIAGRAMS



WARNING

nVent products shall be installed and used only as indicated in nVent's product instruction sheets and training materials. Instruction sheets are available at www.nvent.com and from your nVent customer service representative. Improper installation, misuse, misapplication or other failure to completely follow nVent's instructions and warnings may cause product malfunction, property damage, serious bodily injury and death and/or void your warranty.

North America

+1.800.753.9221

Option 1 – Customer Care

Option 2 – Technical

Support

Europe

Netherlands:

+31 800-0200135

France:

+33 800 901 793

Europe

Germany:

800 1890272

Other Countries:

+31 13 5835404

APAC

Shanghai:

+ 86 21 2412 1618/19

Sydney:

+61 2 9751 8500



Our powerful portfolio of brands:

CADDY

ERICO

HOFFMAN

ILSCO

SCHROFF

TRACHTE