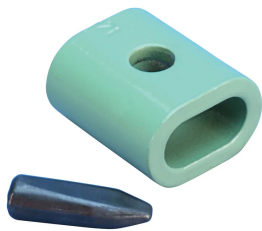


nVent LENTON Quick Wedge Mechanical Lap Coupler, Coated, Pin Included



The nVent LENTON Quick Wedge splice consists of an oval-shaped steel sleeve and a wedge pin. The sleeve is positioned around two very short overlapping steel bars. The wedge pin is inserted into a handheld hydraulic pin-driver and positioned on the sleeve. The pin is then driven through the pre-drilled hole in the sleeve and between the bars to complete the connection.

Coated reinforcing bar is used in place of plain reinforcing bars to protect against corrosion. Typical applications include bridges, parking structures, pavement, marine structures and repair work. nVent LENTON couplers and mechanical anchors are available in multiple coatings to meet specific job requirements.

FEATURES

Short reinforcing bar overlap significantly reduces concrete removal in retrofit applications

Eliminates the need to custom cut and fit rebar to precise measurements

Quick installations result in accelerated job scheduling

Simple to use with only minimal training required

Splice offers quick visual inspection

Each package contains couplers, wedge pins and a spare grommet

Multiple coatings available

SPECIFICATIONS

Material: Steel

Table 1/2

Catalog Number	Finish	Finish Standard	Pin Finish	Packaging	Rebar Size, Metric	Rebar Size, US
ML4ES	Epoxy Coated	ASTM® A775/A775M and AASHTO M284	Plain	Standard	12 mm	#4

CatalogNumber	Finish	Finish Standard	Pin Finish	Packaging	Rebar Size, Metric	Rebar Size, US
ML4G	Hot-Dip Galvanized	ASTM® A767 Class I	Mechanical Galvanized	Standard	12 mm	#4
ML5ES	Epoxy Coated	ASTM® A775/A775M and AASHTO M284	Plain	Standard	16 mm	#5
ML5G	Hot-Dip Galvanized	ASTM® A767 Class I	Mechanical Galvanized	Standard	16 mm	#5
ML5GPKG500	Hot-Dip Galvanized	ASTM® A767 Class I	Mechanical Galvanized	Bulk	16 mm	#5
ML6ES	Epoxy Coated	ASTM® A775/A775M and AASHTO M284	Plain	Standard	20 mm	#6
ML6G	Hot-Dip Galvanized	ASTM® A767 Class I	Mechanical Galvanized	Standard	20 mm	#6
ML6GPKG250	Hot-Dip Galvanized	ASTM® A767 Class I	Mechanical Galvanized	Bulk	20 mm	#6

Table 2/2

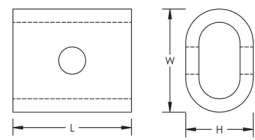
Catalog Number	Rebar Size, Canada	Length (L)	Width (W)	Height (H)	Unit Weight
ML4ES	10M	48mm	42 mm	27 mm	0.23 kg
ML4G	10M	48mm	42 mm	27 mm	0.23 kg
ML5ES	15M	57mm	49 mm	33 mm	0.36 kg
ML5G	15M	57mm	49 mm	33 mm	0.36 kg
ML5GPKG500	15M	57mm	49 mm	33 mm	0.36 kg
ML6ES	20M	70mm	60 mm	40 mm	0.64 kg
ML6G	20M	70mm	60 mm	40 mm	0.64 kg
ML6GPKG250	20M	70mm	60 mm	40 mm	0.64 kg

Designed to Meet: AASHTO;ACI 318 Type 1 (125% Specified Yield)

ADDITIONAL PRODUCT DETAILS

Prior to installation, please read and understand the detailed instructions and safety notices provided in the nVent LENTON Quick Wedge Operator's Manual.

DIAGRAMS



WARNING

nVent products shall be installed and used only as indicated in nVent's product instruction sheets and training materials. Instruction sheets are available at www.nvent.com and from your nVent customer service representative. Improper installation, misuse, misapplication or other failure to completely follow nVent's instructions and warnings may cause product malfunction, property damage, serious bodily injury and death and/or void your warranty.

North America

+1.800.753.9221
Option 1 – Customer Care
Option 2 – Technical
Support

Europe

Netherlands:
+31 800-0200135
France:
+33 800 901 793

Europe

Germany:
800 1890272
Other Countries:
+31 13 5835404

APAC

Shanghai:
+ 86 21 2412 1618/19
Sydney:
+61 2 9751 8500



Our powerful portfolio of brands:

CADDY ERICO HOFFMAN ILSCO SCHROFF TRACHTE