

nVent LENTON Interlok Standard Grout-Fill Coupler, Plain



CERTIFICATIONS



FEATURES

Designed to splice the same diameter bars

Smaller bars can be installed into the over-sized cavity end if required

Over-sized cavity allows for greater field tolerance

Taper-threaded end helps prevent movement of the reinforcing bars and eliminate misalignment

Requires less grout than most competitive systems

SPECIFICATIONS

Material: Cast Iron

Finish: Plain

Table 1/2

Catalog Number	Packaging	Rebar Size, Metric	Rebar Size, US	Rebar Size, Canada	Diameter 1 (Ø1)	Diameter 2 (Ø2)
LK5	Standard	16 mm	#5	15M	65 mm	48 mm

CatalogNumber	Packaging	Rebar Size, Metric	Rebar Size, US	Rebar Size, Canada	Diameter 1(Ø1)	Diameter 2(Ø2)
LK5PKG	Bulk	16 mm	#5	15M	65 mm	48 mm
LK16D	Standard	16 mm	#5	15M	59 mm	41 mm
LK6	Standard	20 mm	#6	20M	65 mm	48 mm
LK6PKG	Bulk	20 mm	#6	20M	65 mm	48 mm
LK7	Standard	22 mm	#7		65 mm	48 mm
LK7PKG	Bulk	22 mm	#7		65 mm	48 mm
LK8PKG	Bulk	25 mm	#8	25M	68 mm	51 mm
LK8	Standard	25 mm	#8	25M	68 mm	51 mm
LK20D	Standard	20 mm	#6	20M	62 mm	45 mm
LK9	Standard	28 mm	#9	30M	71 mm	54 mm
LK9PKG	Bulk	28 mm	#9	30M	71 mm	54 mm
LK25D	Standard	25 mm	#8	25M	68 mm	51 mm
LK10	Standard	32 mm	#10		76 mm	59 mm
LK10PKG	Bulk	32 mm	#10		76 mm	59 mm
LK11	Standard	36 mm	#11	35M	80 mm	62 mm
LK11PKG	Bulk	36 mm	#11	35M	80 mm	62 mm
LK12	Standard	38 mm			94 mm	70 mm
LK36D	Standard	36 mm	#11	35M	81 mm	62 mm

CatalogNumber	Packaging	Rebar Size, Metric	Rebar Size, US	Rebar Size, Canada	Diameter 1(Ø1)	Diameter 2(Ø2)
LKT14	Standard	43 mm	#14	45M	94 mm	70 mm
LKT14PKG	Bulk	43 mm	#14	45M	94 mm	70 mm
LK40	Standard	40 mm			94 mm	70 mm

Table 2/2					
Catalog Number	Length 1 (L1)	Length 2 (L2)	Bar Depth (BD)	Unit Weight	Certifications
LK5	200 mm	156 mm	22mm	1.98 kg	
LK5PKG	200 mm	156 mm	22mm	1.98 kg	
LK16D	201 mm	168 mm	24mm	1.69 kg	
LK6	200 mm	156 mm	28mm	1.96 kg	IAPMO®-UES, LA City Approval
LK6PKG	200 mm	156 mm	28mm	1.96 kg	
LK7	200 mm	156 mm	32mm	1.94 kg	IAPMO®-UES, LA City Approval
LK7PKG	200 mm	156 mm	32mm	1.94 kg	
LK8PKG	219 mm	178 mm	34mm	2.15 kg	
LK8	219 mm	178 mm	34mm	2.15 kg	LA City Approval, IAPMO®-UES
LK20D	226 mm	178 mm	35mm	1.98 kg	
LK9	248 mm	203 mm	38mm	2.44 kg	IAPMO®-UES, LA City Approval
LK9PKG	248 mm	203 mm	38mm	2.44 kg	
LK25D	228 mm	178 mm	40mm	2.26 kg	
LK10	275 mm	229 mm	40mm	2.84 kg	IAPMO®-UES, LA City Approval

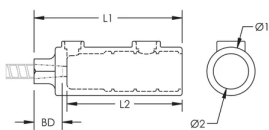
Catalog Number	Length 1 (L1)	Length 2 (L2)	Bar Depth (BD)	Unit Weight	Certifications
LK10PKG	275 mm	229 mm	40mm	2.84 kg	
LK11	305 mm	251 mm	43mm	3.63 kg	LA City Approval, IAPMO®-UES
LK11PKG	305 mm	251 mm	43mm	3.63 kg	
LK12	386 mm	324 mm	44mm	7.14 kg	
LK36D	313 mm	251 mm	52mm	4.04 kg	
LKT14	386 mm	324 mm	56mm	7.26 kg	IAPMO®-UES, LA City Approval
LKT14PKG	386 mm	324 mm	56mm	7.26 kg	
LK40	386 mm	324 mm	57mm	6.33 kg	

ADDITIONAL PRODUCT DETAILS

Bar dimensions and weights listed may vary by region. Coupler sizes not shown may be available by special order. Contact your nVent LENTON representative for more information.

Prior to installation, please read and understand the detailed instructions and safety notices provided in the nVent LENTON Interlok Instruction Manual.

DIAGRAMS



WARNING

nVent products shall be installed and used only as indicated in nVent's product instruction sheets and training materials. Instruction sheets are available at www.nvent.com and from your nVent customer service representative. Improper installation, misuse, misapplication or other failure to completely follow nVent's instructions and warnings may cause product malfunction, property damage, serious bodily injury and death and/or void your warranty.

North America

+1.800.753.9221

Option 1 – Customer Care

Option 2 – Technical

Support

Europe

Netherlands:

+31 800-0200135

France:

+33 800 901 793

Europe

Germany:

800 1890272

Other Countries:

+31 13 5835404

APAC

Shanghai:

+ 86 21 2412 1618/19

Sydney:

+61 2 9751 8500



Our powerful portfolio of brands:

CADDY

ERICO

HOFFMAN

ILSCO

SCHROFF

TRACHTE