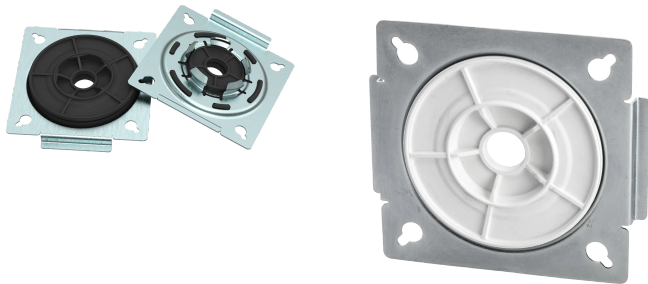


nVent LENTON Interlok Form Saver Seal



The nVent LENTON Interlok Form Saver Seal provides an easy and efficient means for securing nVent LENTON Interlok Grout-Fill Coupler variants to formwork. Designed for cast-in-place applications, simply click and tap the Form Saver Seal into the coupler and utilize the sturdy mounting plate to fasten onto the formwork. The integrated seal allows the secondary rebar to be inserted into the coupler and prevents concrete paste contamination and grout leakage out of the cavity.

Interlok Grout-Fill Coupler variants can be used to splice steel bars in various cast-in-place applications. When combined with the Form Saver Seal, this powerful combination can be utilized for segmental pours, closure pours, post-tensioned slabs, and repair work.

FEATURES

Sturdy, spring-steel mounting flange

Integrated rubber seal for grout cavity

Easy snap-in installation

Four keyholes for easy fastening using nails/screws

Anchor tabs prevent dislodging in concrete

Compatible with all nVent LENTON Interlok Grout-Fill Coupler variants

SPECIFICATIONS

Finish: Plain

Material: Steel

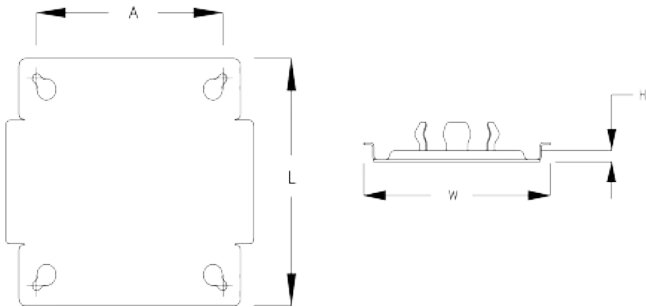
Table 1/1

| Catalog Number | Length (L) | Width (W) | Height (H) | A | Color | Unit Weight |
|----------------|------------|-----------|------------|---|-------|-------------|
|----------------|------------|-----------|------------|---|-------|-------------|

| | | | | | | |
|---------|---------|---------|--------|---------|--------|--------|
| LKFSA16 | 101.6mm | 113.6mm | 10.2mm | 85.2 mm | Black | 0.1 kg |
| LKFSA20 | 101.6mm | 113.6mm | 10.2mm | 85.2 mm | Yellow | 0.1 kg |
| LKFSA22 | 101.6mm | 113.6mm | 10.2mm | 85.2 mm | Blue | 0.1 kg |
| LKFSA25 | 101.6mm | 113.6mm | 10.2mm | 85.2 mm | Red | 0.1 kg |

| Accessory Part Number | Compatible With: | |
|-----------------------|--|---|
| | Interlok Standard Grout Filled Couplers(LK Series) | Interlok No-Thread Grout Filled Couplers(LKNT Series) |
| LKFSA16 | LK16, LK16D | - |
| LKFSA20 | LK20(D) | LKNT20(D) |
| LKFSA22 | LK5, LK6, LK7, LK22(D) | LKNT22(D) |
| LKFSA25 | LK8, LK25(D) | LKNT25(D) |

DIAGRAMS



WARNING

nVent products shall be installed and used only as indicated in nVent's product instruction sheets and training materials. Instruction sheets are available at www.nvent.com and from your nVent customer service representative. Improper installation, misuse, misapplication or other failure to completely follow nVent's instructions and warnings may cause product malfunction, property damage, serious bodily injury and death and/or void your warranty.

North America

+1.800.753.9221

Option 1 – Customer Care

Option 2 – Technical

Support

Europe

Netherlands:

+31 800-0200135

France:

+33 800 901 793

Europe

Germany:

800 1890272

Other Countries:

+31 13 5835404

APAC

Shanghai:

+ 86 21 2412 1618/19

Sydney:

+61 2 9751 8500



Our powerful portfolio of brands:

CADDY

ERICO

HOFFMAN

ILSCO

SCHROFF

TRACHTE