

nVent LENTON Connect S2 Series Shear Bolt Coupler, Epoxy



Coated reinforcing bar is used in place of plain reinforcing bars to protect against corrosion. Typical applications include bridges, parking structures, pavement, marine structures and repair work. nVent LENTON couplers and mechanical anchors are available in multiple coatings to meet specific job requirements.

FEATURES

Requires no special bar end preparation such as sawing

Installs quickly and easily using simple, off-the-shelf hand tools

Bolt heads shear off when bolt torque is achieved, providing for simple visual inspection

Designed to work as a one-step transition/reducer

Rebar centering pin can be removed to allow the coupler to fully pass onto the reinforcing bar for applications such as closure pours

Complies to ACI 318 Type 1 performance on ASTM A706 and ASTM A615 grade 60 reinforcing bar

SPECIFICATIONS

Finish Standard:	ASTM® A775/A775M and AASHTO M284
Finish:	Epoxy Coated
Material:	Steel
100% U.S. Domestic Content:	Yes

Table 1/2

Catalog Number	Rebar Size, Metric	Rebar Size, US	Rebar Size, Canada	Diameter (Ø)	Length 1 (L1)	Length 2 (L2)
LC16S2ESD	12 mm, 16 mm	#4, #5	10M, 15M	41 mm	89 mm	42 mm
LC20S2ESD	20 mm	#6	20M	48 mm	131 mm	63 mm

CatalogNumber	Rebar Size, Metric	Rebar Size, US	Rebar Size, Canada	Diameter (Ø)	Length 1 (L1)	Length 2 (L2)
LC22S2ESD	22 mm	#7		51 mm	174 mm	85 mm
LC25S2ESD	25 mm	#8	25M	61 mm	221 mm	108 mm
LC28S2ESD	28 mm	#9	30M	71 mm	221 mm	108 mm
LC32S2ESD	32 mm	#10		76 mm	284 mm	138 mm
LC36S2ESD	36 mm	#11	35M	80 mm	348 mm	170 mm

Table 2/2

Catalog Number	Socket Width (SW)	Number of Bolts	Torque (TQ)	Unit Weight
LC16S2ESD	13mm	4	115 N·m	0.69 kg
LC20S2ESD	13mm	6	115 N·m	1.24 kg
LC22S2ESD	13mm	8	115 N·m	1.79 kg
LC25S2ESD	16mm	8	261 N·m	3.43 kg
LC28S2ESD	19mm	6	440 N·m	4.91 kg
LC32S2ESD	19mm	8	440 N·m	6.91 kg
LC36S2ESD	19mm	10	440 N·m	8.87 kg

Designed to Meet: AASHTO;ACI 318 Type 1 (125% Specified Yield);CAN/CSA - N287.2/.3/.4;IBC Type 1 (125% Specified Yield);US Army Corps of Engineers;CAN/CSA - A23.3

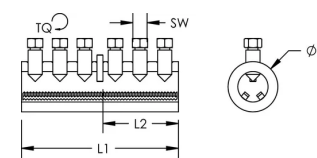
ADDITIONAL PRODUCT DETAILS

Bolt length may vary after the bolt heads are sheared off. Bolt heads are not required to be removed as long as the appropriate bolt torque is achieved.

Refer to complete installation instructions provided with the product or available at nVent.com/LENTON prior to commencing installation.

See instructions for installation equipment recommendations.

DIAGRAMS



WARNING

nVent products shall be installed and used only as indicated in nVent's product instruction sheets and training materials. Instruction sheets are available at www.nvent.com and from your nVent customer service representative. Improper installation, misuse, misapplication or other failure to completely follow nVent's instructions and warnings may cause product malfunction, property damage, serious bodily injury and death and/or void your warranty.

North America

+1.800.753.9221
Option 1 – Customer Care
Option 2 – Technical
Support

Europe

Netherlands:
+31 800-0200135
France:
+33 800 901 793

Europe

Germany:
800 1890272
Other Countries:
+31 13 5835404

APAC

Shanghai:
+ 86 21 2412 1618/19
Sydney:
+61 2 9751 8500



Our powerful portfolio of brands:

CADDY ERICO HOFFMAN ILSCO SCHROFF TRACHTE