

CPP Tapered Plastic Screw-In Plug for A12, A22 and A32K



FEATURES

Designed for use with the A12, A22 and A32K coupler families

Designed to keep dirt, water and concrete slurry out of the coupler during the concrete pour

Color coded for the appropriate coupler size

SPECIFICATIONS

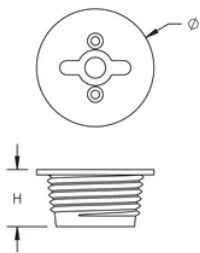
Material: High Density Polyethylene (HDPE)

Table 1/1

Catalog Number	Rebar Size, Metric	Rebar Size, US	Rebar Size, Canada	Diameter (Ø)	Height (H)	Color
EL10CPPB100	10 mm	#3		17 mm	13 mm	Yellow
EL12CPPB100	12 mm	#4	10M	17 mm	13 mm	Red
EL14CPPB100	14 mm			22 mm	13 mm	Green
EL16CPPB100	16 mm	#5	15M	22 mm	13 mm	Black
EL18CPPB100	18 mm			27 mm	13 mm	White

CatalogNumber	Rebar Size, Metric	Rebar Size, US	Rebar Size, Canada	Diameter (Ø)	Height (H)	Color
EL20CPPB100	20 mm	#6	20M	27 mm	13 mm	Yellow
EL22CPPB100	22 mm	#7		33 mm	16 mm	Blue
EL25CPPB100	25 mm	#8	25M	33 mm	16 mm	Red
EL28CPPB100	28 mm	#9	30M	37 mm	16 mm	Black
EL30CPPB100	30 mm			37 mm	16 mm	White
EL32CPPB100	32 mm	#10		42 mm	16 mm	Yellow
EL36CPPB50	36 mm	#11	35M	46 mm	16 mm	Blue
EL40CPPB50	40 mm			52 mm	16 mm	Green
EL50CPPB40	50 mm			64 mm	16 mm	Black

DIAGRAMS



WARNING

nVent products shall be installed and used only as indicated in nVent's product instruction sheets and training materials. Instruction sheets are available at www.nvent.com and from your nVent customer service representative. Improper installation, misuse, misapplication or other failure to completely follow nVent's instructions and warnings may cause product malfunction, property damage, serious bodily injury and death and/or void your warranty.

North America

+1.800.753.9221

Option 1 – Customer Care

Option 2 – Technical

Support

Europe

Netherlands:

+31 800-0200135

France:

+33 800 901 793

Europe

Germany:

800 1890272

Other Countries:

+31 13 5835404

APAC

Shanghai:

+ 86 21 2412 1618/19

Sydney:

+61 2 9751 8500



Our powerful portfolio of brands:

CADDY

ERICO

HOFFMAN

ILSCO

SCHROFF

TRACHTE