

CIPS Tapered Plastic Push-In Plug for A2



FEATURES

Designed for use with the A2 coupler families

Designed to keep dirt and water out of the coupler during transportation and installation

Color coded for the appropriate coupler size

SPECIFICATIONS

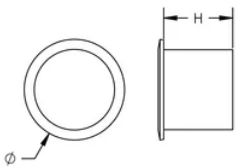
Material: Polyethylene

Table 1/1

Catalog Number	Rebar Size, Metric	Rebar Size, US	Rebar Size, Canada	Diameter (Ø)	Height (H)	Color
EL10CIPS	10 mm	#3		15 mm	7 mm	Yellow
EL12CIPS	12 mm	#4	10M	16 mm	7 mm	Red
EL14CIPS	14 mm			19 mm	7 mm	Green
EL16CIPS	16 mm	#5	15M	21 mm	7 mm	Black
EL18CIPS	18 mm			22 mm	7 mm	White
EL20CIPS	20 mm	#6	20M	26 mm	9 mm	Yellow

CatalogNumber	Rebar Size, Metric	Rebar Size, US	Rebar Size, Canada	Diameter (Ø)	Height (H)	Color
EL22CIPS	22 mm	#7		28 mm	9 mm	Blue
EL25CIPS	25 mm	#8	25M	31 mm	9 mm	Red
EL28CIPS	28 mm	#9	30M	35 mm	9 mm	Black
EL32CIPS	32 mm	#10		39 mm	10 mm	Yellow
EL36CIPS	36 mm	#11	35M	42 mm	10 mm	Blue
EL38CIPS	38 mm	#12		44 mm	10 mm	White
EL40CIPS	40 mm			48 mm	10 mm	Green
EL43TCIPS	43 mm	#14	45M	52 mm	11 mm	Red
EL50TCIPS	50 mm			62 mm	11 mm	Black
EL57TCIPS	57 mm	#18	55M	66 mm	11 mm	Blue

DIAGRAMS



WARNING

nVent products shall be installed and used only as indicated in nVent's product instruction sheets and training materials. Instruction sheets are available at www.nvent.com and from your nVent customer service representative. Improper installation, misuse, misapplication or other failure to completely follow nVent's instructions and warnings may cause product malfunction, property damage, serious bodily injury and death and/or void your warranty.

North America

+1.800.753.9221

Option 1 – Customer Care

Option 2 – Technical

Support

Europe

Netherlands:

+31 800-0200135

France:

+33 800 901 793

Europe

Germany:

800 1890272

Other Countries:

+31 13 5835404

APAC

Shanghai:

+ 86 21 2412 1618/19

Sydney:

+61 2 9751 8500



Our powerful portfolio of brands:

CADDY

ERICO

HOFFMAN

ILSCO

SCHROFF

TRACHTE