

A2 Standard Transition Coupler, Plain



CERTIFICATIONS



FEATURES

Designed to splice different diameter bars where the second bar can be rotated and is not restricted in its axial direction

Slim design maintains concrete cover

Installs quickly and easily

SPECIFICATIONS

Finish: Plain

Material: Steel

100% U.S. Domestic Content: Yes

Table 1/2

Catalog Number	Rebar Size, Metric	Rebar Size, US	Rebar Size, Canada	Hex Width (W)	Diameter (Ø)	Length (L)
EL1210A2	12 mm, 10 mm	#4, #3		17 mm		54mm
EL1612A2	16 mm, 12 mm	#5, #4	15M, 10M	22 mm		59mm

CatalogNumber	Rebar Size, Metric	Rebar Size, US	Rebar Size, Canada	Hex Width (W)	Diameter (Ø)	Length (L)
EL2012A2	20 mm, 12 mm	#6, #4	20M, 10M	27 mm		69mm
EL2216A2	22 mm, 16 mm	#7, #5		30 mm		78mm
EL2220A2	22 mm, 20 mm	#7, #6		30 mm		87mm
EL2516A2	25 mm, 16 mm	#8, #5	25M, 15M		35 mm	81mm
EL2016A2	20 mm, 16 mm	#6, #5	20M, 15M	27 mm		76mm
EL2520A2	25 mm, 20 mm	#8, #6	25M, 20M		35 mm	89mm
EL2522A2	25 mm, 22 mm	#8, #7			35 mm	94mm
EL2816A2	28 mm, 16 mm	#9, #5	30M, 15M		35 mm	84mm
EL2820A2	28 mm, 20 mm	#9, #6	30M, 20M		38 mm	92mm
EL2825A2	28 mm, 25 mm	#9, #8	30M, 25M		38 mm	99mm
EL2822A2	28 mm, 22 mm	#9, #7			38 mm	97mm
EL3220A2	32 mm, 20 mm	#10, #6			44 mm	95mm
EL3228A2	32 mm, 28 mm	#10, #9			44 mm	105mm
EL3225A2	32 mm, 25 mm	#10, #8			44 mm	102mm
EL3222A2	32 mm, 22 mm	#10, #7			44 mm	99mm
EL3632A2	36 mm, 32 mm	#11, #10			48 mm	109mm
EL3620A2	36 mm, 20 mm	#11, #6	35M, 20M		48 mm	98mm
EL3622A2	36 mm, 22 mm	#11, #7			48 mm	102mm

CatalogNumber	Rebar Size, Metric	Rebar Size, US	Rebar Size, Canada	Hex Width (W)	Diameter (Ø)	Length (L)
EL3625A2	36 mm, 25 mm	#11, #8	35M, 25M		48 mm	104mm
EL3628A2	36 mm, 28 mm	#11, #9	35M, 30M		48 mm	107mm
EL3832A2	38 mm, 32 mm				51 mm	114mm
EL43T36A2	43 mm, 36 mm	#14, #11	45M, 35M		57 mm	129mm
EL57T25A2	57 mm, 25 mm	#18, #8	55M, 25M		76 mm	137mm
EL43T25A2	43 mm, 25 mm	#14, #8	45M, 25M		57 mm	121mm
EL43T28A2	43 mm, 28 mm	#14, #9	45M, 30M		57 mm	125mm
EL43T32A2	43 mm, 32 mm	#14, #10			57 mm	127mm
EL57T32A2	57 mm, 32 mm	#18, #10			76 mm	142mm
EL57T36A2	57 mm, 36 mm	#18, #11	55M, 35M		76 mm	145mm
EL57T43TA2	57 mm, 43 mm	#18, #14	55M, 45M		76 mm	160mm
EL57T28A2	57 mm, 28 mm	#18, #9	55M, 30M		76 mm	140mm

Table 2/2

Catalog Number	Bar Depth 1 (BD1)	Bar Depth 2 (BD2)	Bar Gap (BG)	Unit Weight	Certifications
EL1210A2	15mm	18mm	21mm	0.07 kg	
EL1612A2	22mm	15mm	22mm	0.12 kg	IAPMO®-UES, LA City Approval
EL2012A2	28mm	15mm	26mm	0.25 kg	
EL2216A2	32mm	22mm	24mm	0.35 kg	
EL2220A2	32mm	28mm	27mm	0.37 kg	IAPMO®-UES, LA City Approval

Catalog Number	Bar Depth 1 (BD1)	Bar Depth 2 (BD2)	Bar Gap (BG)	Unit Weight	Certifications
EL2516A2	34mm	22mm	25mm	0.39 kg	
EL2016A2	28mm	22mm	26mm	0.4 kg	LA City Approval, IAPMO®-UES
EL2520A2	34mm	28mm	27mm	0.42 kg	
EL2522A2	34mm	32mm	28mm	0.43 kg	LA City Approval, IAPMO®-UES
EL2816A2	38mm	22mm	24mm	0.52 kg	
EL2820A2	38mm	28mm	26mm	0.56 kg	
EL2825A2	38mm	34mm	27mm	0.56 kg	IAPMO®-UES, LA City Approval
EL2822A2	38mm	32mm	27mm	0.58 kg	
EL3220A2	40mm	28mm	27mm	0.82 kg	
EL3228A2	40mm	38mm	27mm	0.82 kg	LA City Approval, IAPMO®-UES
EL3225A2	40mm	34mm	28mm	0.84 kg	
EL3222A2	40mm	32mm	27mm	0.85 kg	
EL3632A2	43mm	40mm	26mm	0.93 kg	LA City Approval, IAPMO®-UES
EL3620A2	43mm	28mm	27mm	0.95 kg	
EL3622A2	43mm	32mm	27mm	0.97 kg	
EL3625A2	43mm	34mm	27mm	0.97 kg	
EL3628A2	43mm	38mm	26mm	0.97 kg	
EL3832A2	44mm	40mm	30mm	1.15 kg	

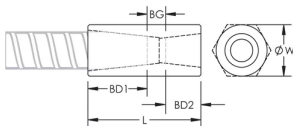
Catalog Number	Bar Depth 1 (BD1)	Bar Depth 2 (BD2)	Bar Gap (BG)	Unit Weight	Certifications
EL43T36A2	56mm	43mm	30mm	1.64 kg	LA City Approval, IAPMO®-UES
EL57T25A2	71mm	34mm	32mm	3.35 kg	
EL43T25A2	56mm	34mm	31mm	1.67 kg	
EL43T28A2	56mm	38mm	31mm	1.69 kg	
EL43T32A2	56mm	40mm	31mm	1.66 kg	
EL57T32A2	71mm	38mm	33mm	3.43 kg	
EL57T36A2	71mm	40mm	34mm	3.45 kg	LA City Approval, IAPMO®-UES
EL57T43TA2	71mm	56mm	33mm	3.74 kg	LA City Approval, IAPMO®-UES
EL57T28A2	71mm	34mm	35mm	3.42 kg	

Designed to Meet: AASHTO;ABNT NBR 8548:1984;ACI 318 Type 1 (125% Specified Yield);ACI 318 Type 2 (Specified Tensile);ACI 349;ACI 359;AS3600

ADDITIONAL PRODUCT DETAILS

Bar dimensions and weights listed may vary by region. Coupler sizes not shown may be available by special order. Contact your nVent LENTON representative for more information.

DIAGRAMS



WARNING

nVent products shall be installed and used only as indicated in nVent's product instruction sheets and training materials. Instruction sheets are available at www.nvent.com and from your nVent customer service representative. Improper installation, misuse, misapplication or other failure to completely follow nVent's instructions and warnings may cause product malfunction, property damage, serious bodily injury and death and/or void your warranty.

North America

+1.800.753.9221

Option 1 – Customer Care

Option 2 – Technical

Support

Europe

Netherlands:

+31 800-0200135

France:

+33 800 901 793

Europe

Germany:

800 1890272

Other Countries:

+31 13 5835404

APAC

Shanghai:

+ 86 21 2412 1618/19

Sydney:

+61 2 9751 8500



Our powerful portfolio of brands:

CADDY

ERICO

HOFFMAN

ILSCO

SCHROFF

TRACHTE