

A12 Standard Transition Coupler, Plain, Worldwide Design



CERTIFICATIONS



FEATURES

Designed to splice different diameter bars where the second bar can be rotated and is not restricted in its axial direction

Slim design maintains concrete cover

Installs quickly and easily

SPECIFICATIONS

Finish:	Plain
Material:	Steel
Design Version:	Worldwide (Globally Available Materials)
100% U.S. Domestic Content:	Yes

Table 1/2

Catalog Number	Rebar Size, Metric	Rebar Size, US	Rebar Size, Canada	Hex Width (W)	Diameter (Ø)	Length (L)
EL1210A12	12 mm, 10 mm	#4, #3		17 mm		55mm

CatalogNumber	Rebar Size, Metric	Rebar Size, US	Rebar Size, Canada	Hex Width (W)	Diameter (Ø)	Length (L)
EL1612A12	16 mm, 12 mm	#5, #4	15M, 10M	22 mm		61mm
EL1614A12	16 mm, 14 mm			22 mm		64mm
EL2016A12	20 mm, 16 mm	#6, #5	20M, 15M	27 mm		80mm
EL2220A12	22 mm, 20 mm	#7, #6		30 mm		95mm
EL2522A12	25 mm, 22 mm	#8, #7			35 mm	100mm
EL2520A12	25 mm, 20 mm	#8, #6	25M, 20M		35 mm	90mm
EL2825A12	28 mm, 25 mm	#9, #8	30M, 25M		41 mm	104mm
EL2820A12	28 mm, 20 mm	#9, #6	30M, 20M		41 mm	101mm
EL3228A12	32 mm, 28 mm	#10, #9			44 mm	110mm
EL3632A12	36 mm, 32 mm	#11, #10			48 mm	120mm
EL3225A12	32 mm, 25 mm	#10, #8			44 mm	109mm
EL4032A12	40 mm, 32 mm				54 mm	126mm
EL3622A12	36 mm, 22 mm	#11, #7			48 mm	114mm
EL43T36A12	43 mm, 36 mm	#14, #11	45M, 35M		57.2 mm	148mm
EL50T40A12	50 mm, 40 mm				70 mm	157mm
EL50T32A12	50 mm, 32 mm				70 mm	147mm
EL57T36A12	57 mm, 36 mm	#18, #11	55M, 35M		76 mm	167mm
EL57T43TA12	57 mm, 43 mm	#18, #14	55M, 45M		76 mm	184mm

Table 2/2

Catalog Number	Bar Depth 1 (BD1)	Bar Depth 2 (BD2)	Bar Gap (BG)	Unit Weight	Certifications
EL1210A12	19mm	18mm	18mm	0.08 kg	
EL1612A12	24mm	19mm	18mm	0.14 kg	IAPMO®-UES, LA City Approval
EL1614A12	24mm	21mm	19mm	0.14 kg	
EL2016A12	35mm	24mm	21mm	0.27 kg	LA City Approval, IAPMO®-UES
EL2220A12	37mm	35mm	23mm	0.36 kg	IAPMO®-UES, LA City Approval
EL2522A12	40mm	37mm	23mm	0.49 kg	LA City Approval, IAPMO®-UES
EL2520A12	40mm	35mm	15mm	0.5 kg	
EL2825A12	42mm	40mm	22mm	0.67 kg	IAPMO®-UES, LA City Approval
EL2820A12	42mm	35mm	24mm	0.69 kg	
EL3228A12	45mm	42mm	23mm	0.88 kg	LA City Approval, IAPMO®-UES
EL3632A12	52mm	45mm	23mm	1.15 kg	LA City Approval, IAPMO®-UES
EL3225A12	45mm	40mm	24mm	0.91 kg	
EL4032A12	57mm	45mm	24mm	1.5 kg	
EL3622A12	52mm	37mm	25mm	1.22 kg	
EL43T36A12	66mm	52mm	30mm	2.1 kg	LA City Approval, IAPMO®-UES
EL50T40A12	70mm	57mm	30mm	3.09 kg	
EL50T32A12	70mm	45mm	32mm	3 kg	
EL57T36A12	83mm	52mm	32mm	4.51 kg	LA City Approval, IAPMO®-UES

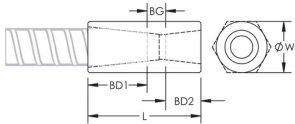
Catalog Number	Bar Depth 1 (BD1)	Bar Depth 2 (BD2)	Bar Gap (BG)	Unit Weight	Certifications
EL57T43TA12	83mm	66mm	35mm	4.87 kg	LA City Approval, IAPMO®-UES

Designed to Meet: AASHTO;ABNT NBR 8548:1984;ACI 318 Type 1 (125% Specified Yield);ACI 318 Type 2 (Specified Tensile);ACI 349;ACI 359;AS3600

ADDITIONAL PRODUCT DETAILS

Bar dimensions and weights listed may vary by region. Coupler sizes not shown may be available by special order. Contact your nVent LENTON representative for more information.

DIAGRAMS



WARNING

nVent products shall be installed and used only as indicated in nVent's product instruction sheets and training materials. Instruction sheets are available at www.nvent.com and from your nVent customer service representative. Improper installation, misuse, misapplication or other failure to completely follow nVent's instructions and warnings may cause product malfunction, property damage, serious bodily injury and death and/or void your warranty.

North America

+1.800.753.9221
Option 1 – Customer Care
Option 2 – Technical
Support

Europe

Netherlands:
+31 800-0200135
France:
+33 800 901 793

Europe

Germany:
800 1890272
Other Countries:
+31 13 5835404

APAC

Shanghai:
+ 86 21 2412 1618/19
Sydney:
+61 2 9751 8500



Our powerful portfolio of brands:

CADDY ERICO HOFFMAN ILSCO SCHROFF TRACHTE