

A12 Standard Coupler, Plain, Worldwide Design



CERTIFICATIONS



FEATURES

Designed to splice the same diameter bars where the second bar can be rotated and is not restricted in its axial direction

Slim design maintains concrete cover

Installs quickly and easily

SPECIFICATIONS

Finish:	Plain
Material:	Steel
Design Version:	Worldwide (Globally Available Materials)
100% U.S. Domestic Content:	Yes

Table 1/2

Catalog Number	Rebar Size, Metric	Rebar Size, US	Rebar Size, Canada	Hex Width (W)	Diameter (Ø)	Length (L)
EL12A12	12 mm	#4	10M	17 mm		50mm
EL10A12	10 mm	#3		17 mm		49mm

CatalogNumber	Rebar Size, Metric	Rebar Size, US	Rebar Size, Canada	Hex Width (W)	Diameter (Ø)	Length (L)
EL14A12	14 mm			22 mm		56mm
EL16A12	16 mm	#5	15M	22 mm		61mm
EL18A12	18 mm			27 mm		72mm
EL20A12	20 mm	#6	20M	27 mm		87mm
EL22A12	22 mm	#7		30 mm		91mm
EL25A12	25 mm	#8	25M		35 mm	97mm
EL28A12	28 mm	#9	30M		38 mm	101mm
EL32A12	32 mm	#10			44 mm	108mm
EL40A12	40 mm				54 mm	131mm
EL36A12	36 mm	#11	35M		48 mm	121mm
EL57TA12	57 mm	#18	55M		76 mm	192mm
EL43TA12	43 mm	#14	45M		57 mm	158mm
EL50TA12	50 mm				70 mm	166mm

Table 2/2

Catalog Number	Bar Depth (BD)	Bar Gap (BG)	Unit Weight
EL12A12	19mm	12mm	0.06 kg
EL10A12	18mm	13mm	0.07 kg
EL14A12	21mm	14mm	0.13 kg
EL16A12	24mm	13mm	0.13 kg

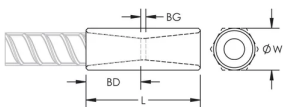
Catalog Number	Bar Depth (BD)	Bar Gap (BG)	Unit Weight
EL18A12	29mm	14mm	0.25 kg
EL20A12	35mm	17mm	0.27 kg
EL22A12	37mm	17mm	0.35 kg
EL25A12	40mm	17mm	0.44 kg
EL28A12	42mm	17mm	0.52 kg
EL32A12	45mm	18mm	0.76 kg
EL40A12	57mm	17mm	1.31 kg
EL36A12	52mm	17mm	0.91 kg
EL57TA12	83mm	26mm	3.75 kg
EL43TA12	66mm	26mm	1.74 kg
EL50TA12	70mm	26mm	2.89 kg

Designed to Meet: AASHTO;ABNT NBR 8548:1984;ACI 318 Type 1 (125% Specified Yield);ACI 318 Type 2 (Specified Tensile);ACI 349;ACI 359;AS3600

ADDITIONAL PRODUCT DETAILS

Bar dimensions and weights listed may vary by region. Coupler sizes not shown may be available by special order. Contact your nVent LENTON representative for more information.

DIAGRAMS



WARNING

nVent products shall be installed and used only as indicated in nVent's product instruction sheets and training materials. Instruction sheets are available at www.nvent.com and from your nVent customer service representative. Improper installation, misuse, misapplication or other failure to completely follow nVent's instructions and warnings may cause product malfunction, property damage, serious bodily injury and death and/or void your warranty.

North America

+1.800.753.9221
Option 1 – Customer Care
Option 2 – Technical
Support

Europe

Netherlands:
+31 800-0200135
France:
+33 800 901 793

Europe

Germany:
800 1890272
Other Countries:
+31 13 5835404

APAC

Shanghai:
+ 86 21 2412 1618/19
Sydney:
+61 2 9751 8500



Our powerful portfolio of brands:

CADDY ERICO HOFFMAN ILSCO SCHROFF TRACHTE