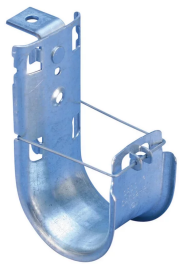
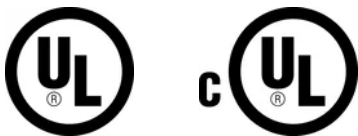


# nVent CADDY Cat HP J-Hook with Angle Bracket

## Data Solutions



### CERTIFICATIONS



### FEATURES

Ideal for attaching to concrete, steel or wood surfaces

Provides optimal support for high-performance data cable, up to and including Cat 5e, Cat 6, Cat 6A, Cat 7 and fibre optic

Provides superior fill capacity and load rating over most other non-continuous cable support alternatives

Rounded edges on J-Hooks provide proper bend radius support for high performance data cables

Cost effective alternative to expensive cable tray

Complies with EN 50174-2

Meets ISO®/IEC 14763-2, ANSI®/TIA 568 and ANSI®/TIA 569

### SPECIFICATIONS

**Finish:** Pregalvanized

**Material:** Steel

Table 1/2

Catalog Number	Diameter (Ø)	Area	Cable Capacity, Cat 5e	Cable Capacity, Cat 6	Cable Capacity, Cat 6A	Hole Size (HS)
CAT16HPAB	25mm	690mm <sup>2</sup>	20	15	10	6.3mm
CAT21HPAB	33.3mm	1174mm <sup>2</sup>	50	40	25	6.3mm
CAT32HPAB	50mm	2561mm <sup>2</sup>	90	60	35	6.3mm
CAT48HPAB	75mm	5974mm <sup>2</sup>	200	150	80	6.3mm
CAT64HPAB	100mm	9987mm <sup>2</sup>	330	220	140	6.3mm

Table 2/2

Catalog Number	Static Load
CAT16HPAB	270N
CAT21HPAB	270N
CAT32HPAB	270N
CAT48HPAB	270N
CAT64HPAB	270N

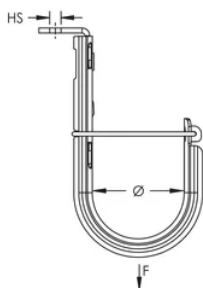
## ADDITIONAL PRODUCT DETAILS

Non-continuous supports may not exceed spacing of 5' (1.5 m) per TIA 569-C.9.7 and EN 50174-2.

Cable capacity is calculated based on a 70% fill rate.

## DIAGRAMS

---



## WARNING

---

nVent products shall be installed and used only as indicated in nVent's product instruction sheets and training materials. Instruction sheets are available at [www.nvent.com](http://www.nvent.com) and from your nVent customer service representative. Improper installation, misuse, misapplication or other failure to completely follow nVent's instructions and warnings may cause product malfunction, property damage, serious bodily injury and death and/or void your warranty.



Our powerful portfolio of brands:

**CADDY   ERICO   HOFFMAN   ILSCO   SCHROFF   TRACHTE**