

Two Hole Pipe Strap



FEATURES

Light duty support of pipe

Attaches directly to the face of a horizontal or vertical structural member

Conforms with Federal Specification WW-H-171 (Type 26), Manufacturers Standardization Society (MSS) SP-58 (Type 26)

SPECIFICATIONS

Finish: Electrogalvanized

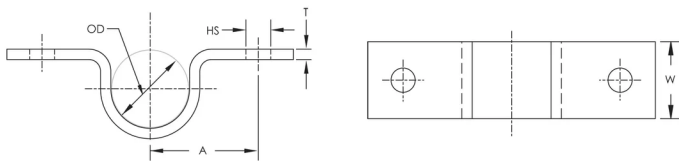
Material: Steel

Table 1/1

Catalog Number	Outer Diameter (OD)	Hole Size (HS)	Width (W)	Thickness (T)	A
0080050EG	21.3 mm	6.4 mm	15.9 mm	0.79 mm	28.57 mm
0080075EG	26.7 mm	6.4 mm	19.1 mm	0.95 mm	31.75 mm
0080100EG	33.4 mm	6.4 mm	19.1 mm	0.95 mm	34.92 mm
0080125EG	42.2 mm	6.4 mm	22.2 mm	1.3 mm	38.1 mm
0080150EG	48.3 mm	6.4 mm	31.8 mm	1.5 mm	41.27 mm

Catalog Number	Outer Diameter (OD)	Hole Size (HS)	Width (W)	Thickness (T)	A
0080200EG	60.3 mm	6.4 mm	31.8 mm	1.5 mm	47.62 mm
0080250EG	73 mm	6.4 mm	31.8 mm	1.5 mm	53.98 mm
0080300EG	88.9 mm	6.4 mm	31.8 mm	1.7 mm	80.96 mm
0080400EG	114.3 mm	6.4 mm	31.8 mm	1.3 mm	88.9 mm

DIAGRAMS



WARNING

nVent products shall be installed and used only as indicated in nVent's product instruction sheets and training materials. Instruction sheets are available at www.nvent.com and from your nVent customer service representative. Improper installation, misuse, misapplication or other failure to completely follow nVent's instructions and warnings may cause product malfunction, property damage, serious bodily injury and death and/or void your warranty.

North America

+1.800.753.9221
Option 1 – Customer Care
Option 2 – Technical
Support

Europe

Netherlands:
+31 800-0200135
France:
+33 800 901 793

Europe

Germany:
800 1890272
Other Countries:
+31 13 5835404

APAC

Shanghai:
+ 86 21 2412 1618/19
Sydney:
+61 2 9751 8500



Our powerful portfolio of brands:

CADDY ERICO HOFFMAN ILSCO SCHROFF TRACHTE

