

Conduit Trapeze CCT1



The nVent CADDY Conduit Trapeze CCT1 range is a fast and cost-effective method to install smaller branch circuits of conduit in overhead trapeze installations. The CCT1 series reduces installation time and material cost by eliminating the need for traditional fasteners, making it an ideal solution for contractors looking to maximize installation efficiency.

CERTIFICATIONS



FEATURES

Ideal for smaller branch runs

Shot fire flange for direct attachment to ceiling/deck

Accommodates 3/8" and 1/4" threaded rod trapeze drops

Up to 25% material savings over traditional methods

Reduces installation time up to 50%

Complies with UL® 2239

SPECIFICATIONS

Finish: Pregalvanized

Material: Steel

Table 1/2

Catalog Number	Number of Conduits	Rod Size (RS)	Hole Size 1 (HS1)	Hole Size 2 (HS2)	Hole Size 3 (HS3)	Hole Size 4 (HS4)
CCT1X15	8	10	11.11 mm	7.14 mm	3.17mm	34.9mm

CatalogNumber	Number of Conduits	Rod Size (RS)	Hole Size 1 (HS1)	Hole Size 2 (HS2)	Hole Size 3 (HS3)	Hole Size 4 (HS4)
CCT1X30	16	10	11.11 mm	7.14 mm	3.17mm	34.9mm
CCT1X45	24	10	11.11 mm	7.14 mm	3.17mm	34.9mm
CCT1X90	48	10	11.11 mm	7.14 mm	3.17mm	34.9mm

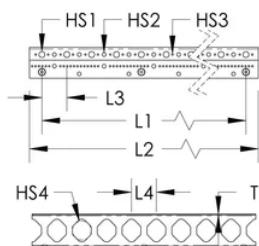
Table 2/2					
Catalog Number	Length 1 (L1)	Length 2 (L2)	Length 3 (L3)	Length 4 (L4)	Length (L)
CCT1X15	368.3 mm	414.34 mm	46.04mm	46.04 mm	414mm
CCT1X30	736.6 mm	782.64 mm	46.04mm	46.04 mm	782mm
CCT1X45	1105 mm	1151 mm	46.04mm	46.04 mm	1150mm
CCT1X90	2210 mm	2256 mm	46.04mm	46.04 mm	2255mm

ADDITIONAL PRODUCT DETAILS

For 3/8" and 1/4" threaded rod trapeze drops, use washer or SN25 for 1/4" threaded rod applications.

The table contains maximum conduit size values.

DIAGRAMS



WARNING

nVent products shall be installed and used only as indicated in nVent's product instruction sheets and training materials. Instruction sheets are available at www.nvent.com and from your nVent customer service representative. Improper installation, misuse, misapplication or other failure to completely follow nVent's instructions and warnings may cause product malfunction, property damage, serious bodily injury and death and/or void your warranty.

North America

+1.800.753.9221

Option 1 – Customer Care

Option 2 – Technical

Support

Europe

Netherlands:

+31 800-0200135

France:

+33 800 901 793

Europe

Germany:

800 1890272

Other Countries:

+31 13 5835404

APAC

Shanghai:

+ 86 21 2412 1618/19

Sydney:

+61 2 9751 8500



Our powerful portfolio of brands:

CADDY

ERICO

HOFFMAN

ILSCO

SCHROFF

TRACHTE

