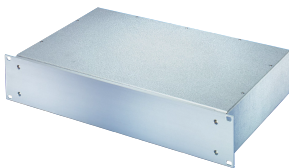


# MultipacPRO 19" Chassis, Steel, AlZn, Plain Top and Base

## Power Utilities



This 19" chassis is a form of subrack which accepts horizontal board mounting or the mounting of non-standard components like transformers or other heavy load accessories typically mounted on a chassis plate. This version is produced from sheet metal, Al-Zn coated and have plain top and bottom covers.

## CERTIFICATIONS



## FEATURES

Steel (AlZn coated) with Al extrusion front panel

Detachable front and rear panel for easy machining

IP 20, in accordance with IEC 60529

Supplied as space-saving flat-pack

EMC shielding: Approx. 20dB(A) at 2GHz without shielding material. >40dB(A) at 1Ghz with addition of stainless steel gasket between front panel and case body

Internal and external dimensions in accordance with: IEC 60297-3-101

EMC shielding: Approx. 20dB(A) at 2 GHz without shielding material. >40dB(A) at 1 GHz with addition of stainless steel gasket between front panel and case body

## SPECIFICATIONS

Table 1/2

Catalog Number	Rack Height	Depth	Usable Width	Mounting	Complies With	EMC Shielding
20860-120	1 U	220 mm	447 mm	Rack	IEC 60297-3-100, IEC 60297-3-105	No (Retrofittable)
20860-121	1 U	280 mm	447 mm	Rack	IEC 60297-3-100, IEC 60297-3-105	No (Retrofittable)
20860-122	1 U	340 mm	447 mm	Rack	IEC 60297-3-100, IEC 60297-3-105	No (Retrofittable)
20860-126	2 U	280 mm	447 mm	Rack	IEC 60297-3-100	No (Retrofittable)
20860-127	2 U	340 mm	447 mm	Rack	IEC 60297-3-100	No (Retrofittable)

Table 2/2

Catalog Number	Product Family	Product Type	Type
20860-120	MultipacPRO	Subrack/Chassis	Solid
20860-121	MultipacPRO	Subrack/Chassis	Solid
20860-122	MultipacPRO	Subrack/Chassis	Solid
20860-126	MultipacPRO	Subrack/Chassis	Solid
20860-127	MultipacPRO	Subrack/Chassis	Solid

## ADDITIONAL PRODUCT DETAILS

Please order front handles separately.

Telescopic slides cannot be used.

Further versions with steel front panel (pizza box) available on request.

Standardised internal mounting kits cannot be used.

## WARNING

nVent products shall be installed and used only as indicated in nVent's product instruction sheets and training materials. Instruction sheets are available at [www.nvent.com](http://www.nvent.com) and from your nVent customer service representative. Improper installation, misuse, misapplication or other failure to completely follow nVent's instructions and warnings may cause

product malfunction, property damage, serious bodily injury and death and/or void your warranty.



Our powerful portfolio of brands:

**CADDY   ERICO   HOFFMAN   ILSCO   SCHROFF   TRACHTE**