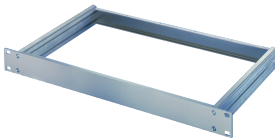


MultipacPRO 19" Chassis Basic Kit

Power Utilities

Such a kit enables a customer to configure the 3 different top / bottom covers.



CERTIFICATIONS



FEATURES

For non-standardized assemblies (1 ... 5 U) and standardized assemblies (1, 2 U) conforming to IEC 60297-3-105

Frame consists of two lateral parts and front/rear panel

Material: aluminium

Select further components (Accessories)

SPECIFICATIONS

Table 1/2

| Catalog Number | Rack Height | Depth | Usable Width | Mounting | Complies With | EMC Shielding |
|----------------|-------------|--------|--------------|----------|-----------------|--------------------|
| 20860-201 | 1 U | 220 mm | 403 mm | Rack | IEC 60297-3-100 | No (Retrofittable) |
| 20860-202 | 1 U | 280 mm | 403 mm | Rack | IEC 60297-3-100 | No (Retrofittable) |

| CatalogNumber | Rack Height | Depth | Usable Width | Mounting | Complies With | EMC Shielding |
|---------------|-------------|--------|--------------|----------|-----------------|--------------------|
| 20860-203 | 1 U | 340 mm | 403 mm | Rack | IEC 60297-3-100 | No (Retrofittable) |
| 20860-204 | 1 U | 400 mm | 4 mm | Rack | IEC 60297-3-100 | No (Retrofittable) |
| 20860-205 | 1 U | 460 mm | 4 mm | Rack | IEC 60297-3-100 | No (Retrofittable) |
| 20860-210 | 2 U | 220 mm | 403 mm | Rack | IEC 60297-3-100 | No (Retrofittable) |
| 20860-211 | 2 U | 280 mm | 403 mm | Rack | IEC 60297-3-100 | No (Retrofittable) |
| 20860-212 | 2 U | 340 mm | 403 mm | Rack | IEC 60297-3-100 | No (Retrofittable) |
| 20860-213 | 2 U | 400 mm | 4 mm | Rack | IEC 60297-3-100 | No (Retrofittable) |
| 20860-214 | 2 U | 460 mm | 4 mm | Rack | IEC 60297-3-100 | No (Retrofittable) |
| 20860-219 | 3 U | 280 mm | 403 mm | Rack | IEC 60297-3-100 | No (Retrofittable) |
| 20860-220 | 3 U | 340 mm | 403 mm | Rack | IEC 60297-3-100 | No (Retrofittable) |
| 20860-221 | 3 U | 400 mm | 403 mm | Rack | IEC 60297-3-100 | No (Retrofittable) |
| 20860-222 | 3 U | 460 mm | 403 mm | Rack | IEC 60297-3-100 | No (Retrofittable) |
| 20860-228 | 4 U | 280 mm | 403 mm | Rack | IEC 60297-3-100 | No (Retrofittable) |
| 20860-229 | 4 U | 340 mm | 403 mm | Rack | IEC 60297-3-100 | No (Retrofittable) |
| 20860-230 | 4 U | 400 mm | 403 mm | Rack | IEC 60297-3-100 | No (Retrofittable) |
| 20860-231 | 4 U | 460 mm | 403 mm | Rack | IEC 60297-3-100 | No (Retrofittable) |
| 20860-240 | 5 U | 460 mm | 403 mm | Rack | IEC 60297-3-100 | No (Retrofittable) |

Table 2/2

| Catalog Number | Product Family | Product Type | Type | Certifications |
|----------------|----------------|--------------|------|----------------|
|----------------|----------------|--------------|------|----------------|

| | | | | |
|-----------|-------------|-----------------|--------------|------|
| 20860-201 | MultipacPRO | Subrack/Chassis | Configurable | RoHS |
| 20860-202 | MultipacPRO | Subrack/Chassis | Configurable | RoHS |
| 20860-203 | MultipacPRO | Subrack/Chassis | Configurable | RoHS |
| 20860-204 | MultipacPRO | Subrack/Chassis | Configurable | |
| 20860-205 | MultipacPRO | Subrack/Chassis | Configurable | |
| 20860-210 | MultipacPRO | Subrack/Chassis | Configurable | RoHS |
| 20860-211 | MultipacPRO | Subrack/Chassis | Configurable | RoHS |
| 20860-212 | MultipacPRO | Subrack/Chassis | Configurable | RoHS |
| 20860-213 | MultipacPRO | Subrack/Chassis | Configurable | |
| 20860-214 | MultipacPRO | Subrack/Chassis | Configurable | |
| 20860-219 | MultipacPRO | Subrack/Chassis | Configurable | RoHS |
| 20860-220 | MultipacPRO | Subrack/Chassis | Configurable | RoHS |
| 20860-221 | MultipacPRO | Subrack/Chassis | Configurable | RoHS |
| 20860-222 | MultipacPRO | Subrack/Chassis | Configurable | RoHS |
| 20860-228 | MultipacPRO | Subrack/Chassis | Configurable | RoHS |
| 20860-229 | MultipacPRO | Subrack/Chassis | Configurable | RoHS |
| 20860-230 | MultipacPRO | Subrack/Chassis | Configurable | RoHS |
| 20860-231 | MultipacPRO | Subrack/Chassis | Configurable | RoHS |
| 20860-240 | MultipacPRO | Subrack/Chassis | Configurable | RoHS |

ADDITIONAL PRODUCT DETAILS

Please order mounting plate, cover and base plates, handles, telescopic slides separately.

Dimensions h = clear mounting height = H-8.1 mm, b = clear mounting width = 403 mm.

WARNING

nVent products shall be installed and used only as indicated in nVent's product instruction sheets and training materials. Instruction sheets are available at www.nvent.com and from your nVent customer service representative. Improper installation, misuse, misapplication or other failure to completely follow nVent's instructions and warnings may cause product malfunction, property damage, serious bodily injury and death and/or void your warranty.



Our powerful portfolio of brands:

CADDY ERICO HOFFMAN ILSCO SCHROFF TRACHTE