

# nVent LENTON Interlok Position Transition Grout-Fill Coupler



## FEATURES

Designed to splice different diameter bars

Positional feature allows the threaded coupler end to telescope out to close a gap between forms and to allow alignment of the grout tubes

Over-sized cavity allows for greater field tolerance

Taper-threaded end helps prevent movement of the reinforcing bars and eliminate misalignment

Requires less grout than most competitive systems

## SPECIFICATIONS

Table 1/3

Catalog Number	Material	Finish	Packaging	Rebar Size, Metric	Rebar Size, US	Diameter 1 (Ø1)
LK1110STHD	Cast Iron	Plain	Standard	36 mm, 32 mm	#11, #10	80 mm

Table 2/3

Catalog Number	Diameter 2 (Ø2)	Length 1 (L1)	Length 2 (L2)	Length 3 (L3)	Bar Depth (BD)	Coupler Body (CB)
LK1110STHD	62 mm	384 mm	410 mm	251mm	40mm	305mm

Table 3/3

Catalog Number	Unit Weight
----------------	-------------

LK1110STHD	4.59 kg
------------	---------

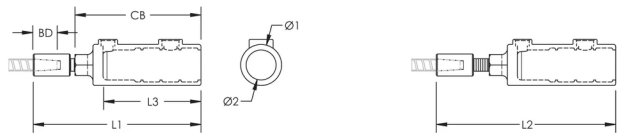
**Designed to Meet:** AASHTO;ABNT NBR 8548:1984;ACI 318 Type 1 (125% Specified Yield);ACI 318 Type 2 (Specified Tensile);ACI 349;ACI 359;AS3600

### ADDITIONAL PRODUCT DETAILS

Bar dimensions and weights listed may vary by region. Coupler sizes not shown may be available by special order. Contact your nVent LENTON representative for more information.

Prior to installation, please read and understand the detailed instructions and safety notices provided in the nVent LENTON Interlok Instruction Manual.

### DIAGRAMS



### WARNING

nVent products shall be installed and used only as indicated in nVent's product instruction sheets and training materials. Instruction sheets are available at [www.nvent.com](http://www.nvent.com) and from your nVent customer service representative. Improper installation, misuse, misapplication or other failure to completely follow nVent's instructions and warnings may cause product malfunction, property damage, serious bodily injury and death and/or void your warranty.

#### North America

+1.800.753.9221  
Option 1 – Customer Care  
Option 2 – Technical Support

#### Europe

Netherlands:  
+31 800-0200135  
France:  
+33 800 901 793

#### Europe

Germany:  
800 1890272  
Other Countries:  
+31 13 5835404

#### APAC

Shanghai:  
+ 86 21 2412 1618/19  
Sydney:  
+61 2 9751 8500



Our powerful portfolio of brands:

**CADDY ERICO HOFFMAN ILSCO SCHROFF TRACHTE**