

nVent LENTON Interlok Position Grout-Fill Coupler



FEATURES

Designed to splice the same diameter bars

Smaller bars can be installed into the over-sized cavity end if required

Positional feature allows the threaded coupler end to telescope out to close a gap between forms and to allow alignment of the grout tubes

Over-sized cavity allows for greater field tolerance

Taper-threaded end helps prevent movement of the reinforcing bars and eliminate misalignment

Requires less grout than most competitive systems

SPECIFICATIONS

Material: Cast Iron

Finish: Plain

Packaging: Standard

Table 1/2

Catalog Number	Rebar Size, Metric	Rebar Size, US	Rebar Size, Canada	Diameter 1 (Ø1)	Diameter 2 (Ø2)	Length 1 (L1)
LK6STHD	20 mm	#6	20M	65 mm	48 mm	265 mm
LK11STHD	36 mm	#11	35M	80 mm	62 mm	389 mm

CatalogNumber	Rebar Size, Metric	Rebar Size, US	Rebar Size, Canada	Diameter 1(Ø1)	Diameter 2(Ø2)	Length 1 (L1)
LKT14STHD	43 mm	#14	45M	94 mm	70 mm	485 mm

Table 2/2

Catalog Number	Length 2 (L2)	Length 3 (L3)	Bar Depth (BD)	Coupler Body (CB)	Unit Weight
LK6STHD	284 mm	156mm	28mm	200mm	2.42 kg
LK11STHD	414 mm	251mm	43mm	305mm	4.59 kg
LKT14STHD	505 mm	312mm	56mm	386mm	8.3 kg

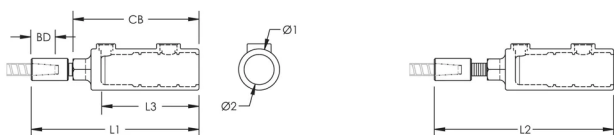
Designed to Meet: AASHTO;ABNT NBR 8548:1984;ACI 318 Type 1 (125% Specified Yield);ACI 318 Type 2 (Specified Tensile);ACI 349;ACI 359;AS3600

ADDITIONAL PRODUCT DETAILS

Bar dimensions and weights listed may vary by region. Coupler sizes not shown may be available by special order. Contact your nVent LENTON representative for more information.

Prior to installation, please read and understand the detailed instructions and safety notices provided in the nVent LENTON Interlok Instruction Manual.

DIAGRAMS



WARNING

nVent products shall be installed and used only as indicated in nVent's product instruction sheets and training materials. Instruction sheets are available at www.nvent.com and from your nVent customer service representative. Improper installation, misuse, misapplication or other failure to completely follow nVent's instructions and warnings may cause product malfunction, property damage, serious bodily injury and death and/or void your warranty.

North America

+1.800.753.9221

Option 1 – Customer Care

Option 2 – Technical

Support

Europe

Netherlands:

+31 800-0200135

France:

+33 800 901 793

Europe

Germany:

800 1890272

Other Countries:

+31 13 5835404

APAC

Shanghai:

+ 86 21 2412 1618/19

Sydney:

+61 2 9751 8500



Our powerful portfolio of brands:

CADDY

ERICO

HOFFMAN

ILSCO

SCHROFF

TRACHTE