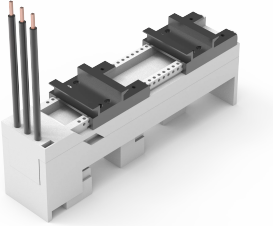


# Busbar Adapter 32A With Cables And 2 Mounting Rails, W060

Busbar adapter 32 A. With two adjustable mounting rails. The upper section is removable and has pre-fitted cables.



## INDUSTRY STANDARDS

---

UL

CSA

GL

## FEATURES

---

Description: Busbar adapter 32 A. With two adjustable mounting rails. With removable upper section and leads (6 mm<sup>2</sup>).

Rated voltage: 690 V

Rated current: 32 A

For busbars: 12, 15, 20, 25, 30 × 5, 10

Power dissipation at 80% load: 2.2 W

Poles: 3-pole

Dimensions: 54 × 200 × 75 mm

Pack quantity: 1 pc.

Approvals: CSA, UL, GL

## SPECIFICATIONS

Table 1/1

Catalog Number	Height	Width	Depth	Material	Finish	Color
32404	54mm	200mm	75mm	Plastic, Mild Steel	Plated	Black, Light Gray

## WARNING

nVent products shall be installed and used only as indicated in nVent's product instruction sheets and training materials. Instruction sheets are available at [www.nvent.com](http://www.nvent.com) and from your nVent customer service representative. Improper installation, misuse, misapplication or other failure to completely follow nVent's instructions and warnings may cause product malfunction, property damage, serious bodily injury and death and/or void your warranty.



Our powerful portfolio of brands:

**CADDY ERICO HOFFMAN ILSCO SCHROFF TRACHTE**