

# DPCB Punched Plain Copper Busbar, Single



## CERTIFICATIONS



## FEATURES

Heavy-duty power connection

Circuit breaker, generator and prefabricated power network conductor

Alternative to large and multiple cables

Earth/ground connection

Power distribution

Rounded edges

## SPECIFICATIONS

Table 1/2

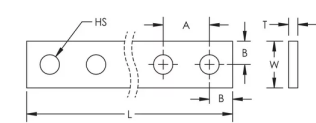
Catalog Number	Article Number	Material	Width (W)	Thickness (T)	Length (L)	Hole Size (HS)
DPCB25X5	550400	Copper	25 mm	5 mm	1750mm	10.5 mm

Table 2/2

Catalog Number	Article Number	A	B	Unit Weight
----------------	----------------	---	---	-------------

DPCB25X5	550400	25 mm	12.5 mm	1.4 kg
----------	--------	-------	---------	--------

### DIAGRAMS



### WARNING

nVent products shall be installed and used only as indicated in nVent's product instruction sheets and training materials. Instruction sheets are available at [www.nvent.com](http://www.nvent.com) and from your nVent customer service representative. Improper installation, misuse, misapplication or other failure to completely follow nVent's instructions and warnings may cause product malfunction, property damage, serious bodily injury and death and/or void your warranty.

#### North America

+1.800.753.9221  
Option 1 – Customer Care  
Option 2 – Technical  
Support

#### Europe

Netherlands:  
+31 800-0200135  
France:  
+33 800 901 793

#### Europe

Germany:  
800 1890272  
Other Countries:  
+31 13 5835404

#### APAC

Shanghai:  
+ 86 21 2412 1618/19  
Sydney:  
+61 2 9751 8500



Our powerful portfolio of brands:

CADDY   ERICO   HOFFMAN   ILSCO   SCHROFF   TRACHTE