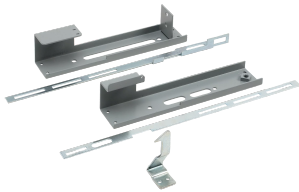


# Operator Adapters for Universal Cutouts



Used on all nVent HOFFMAN Type 4 and 12 disconnect enclosures with a universal flange cutout. An operator adapter is required to install a disconnect in Bulletin A21, A28, A34, A35, and A4L3D HOFFMAN enclosures that have a universal cutout. Operator adapters include an adapter plate and additional components needed to interlock the master door with the disconnect operating mechanism. Installation instructions are included with each operator adapter. Each brand and type of disconnect requires a different operator adapter. Be sure to select the correct operator adapter and enclosure for the disconnect device selected. A 400A (or greater) disconnect switch and 600A (or greater) circuit breaker require the large handle. A 200A (or less) disconnect switch and 400A (or less) circuit breaker require a small handle.

## FEATURES

Used on all nVent HOFFMAN Type 4 and 12 disconnect enclosures with a universal flange cutout

An operator adapter is required to install a disconnect in Bulletin A21, A28, A34, A35 and A4L3D HOFFMAN enclosures that have a universal cutout

Operator adapters include an adapter plate and additional components needed to interlock the master door with the disconnect operating mechanism

Installation instructions are included with each operator adapter

Each brand and type of disconnect requires a different operator adapter

A 400A (or greater) disconnect switch and 600A (or greater) circuit breaker require the large handle

A 200A (or less) disconnect switch and 400A (or less) circuit breaker require a small handle

## SPECIFICATIONS

**Color Code:** ANSI 61  
**Color:** Gray  
**Material:** Mild Steel  
**Finish:** Powder Coated

Table 1/1

Catalog Number	Article Number	Height	Width	Depth	Thickness	Brand and Type of Operator
ABF	28089	268mm	61mm	9mm	2.66mm	Allen-Bradley 1494F & 1494D Fixed-Depth Mechanisms
ABS	28087	268mm	57mm	9mm	2.66mm	Allen-Bradley 1494V Variable-Depth, Allen-Bradley 140U, Allen-Bradley 1494 Universal, All 140G Handles, 1494U Universal, 1494C & 194RC Cable-Operated, Large Handle
SQDC	28098	268mm	62mm	13mm	2.66mm	Square D® Class 9422 Flex-Cable Mechanisms
WAMTF	29132	268mm	62mm	13mm	2.66mm	Eaton Cutler-Hammer/Westin ghouse Flex-Cable for Circuit Breakers Except for F Frame
SITES	28103	268mm	62mm	13mm	2.66mm	Siemens I-T-E Max-Flex™, Small Handle
ECHC	28094	268mm	62mm	13mm	2.66mm	Eaton Cutler-Hammer C371 Flex-Shaft Cable-Operated
GEC	28102	268mm	62mm	13mm	2.66mm	General Electric Flexible Cable-Operated
ABBSV	29167	268mm	61mm	16mm	2.66mm	ABB Variable-Depth, Small Handle
SITEL	28104	268mm	57mm	16mm	2.66mm	Siemens I-T-E Max-Flex™, Large Handle

Catalog Number	Article Number	Height	Width	Depth	Thickness	Brand and Type of Operator
ABL	28088	268mm	61mm	16mm	2.66mm	Allen-Bradley 1494V Variable-Depth, Allen-Bradley 140U, 1494C & 194RC Cable-Operated, Allen-Bradley 1494 Universal, Large Handle
ABBSC	28095	268mm	62mm	16mm	2.66mm	ABB Controls, Small Handle
ABBLC	28096	268mm	57mm	16mm	2.66mm	ABB Controls, Large Handle
WAMT	28092	268mm	67mm	19mm	2.66mm	Eaton Cutler-Hammer/Westinghouse Below Handle AMT & Flex-Cable for F Frame Circuit Breakers
SQDV	28097	268mm	57mm	25mm	2.66mm	Square D® Class 9422 Variable-Depth
GEV	28099	268mm	62mm	61mm	2.66mm	General Electric STDA Variable-Depth
ECHV	28093	268mm	57mm	61mm	2.66mm	Eaton Cutler-Hammer C361, C371 Variable-Depth

## ADDITIONAL PRODUCT DETAILS

Please use new catalog numbers when ordering. Refer to the spec sheet for a catalog number cross-reference.

## WARNING

nVent products shall be installed and used only as indicated in nVent's product instruction sheets and training materials. Instruction sheets are available at [www.nvent.com](http://www.nvent.com) and from your nVent customer service representative. Improper installation, misuse, misapplication or other failure to completely follow nVent's instructions and warnings may cause product malfunction, property damage, serious bodily injury and death and/or void your warranty.



Our powerful portfolio of brands:

**CADDY   ERICO   HOFFMAN   ILSCO   SCHROFF   TRACHTE**