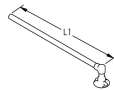
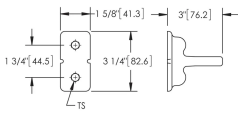


Earthbridge B162, Two Stud, Solid Round Steel, 90° Angle



Earthbridges are assemblies made from a high-quality conductive earthpoint (connecting terminal) and various types of conductors. The nVent ERICO Cadweld exothermic connection process is used to combine them together, forming a highly corrosion resistant and long-lasting assembly.

DIAGRAMS



FEATURES

Long-lasting design

Low ground resistance and impedance

Superior electrical conductivity and resistance to corrosion

Electrically and mechanically robust and reliable

Easy to install

SPECIFICATIONS

Table 1/3

| Catalog Number | Article Number | Material | Type | Earthpoint Type | Conductor Type | Conductor Size |
|----------------|----------------|---------------|------|-----------------|------------------------------|----------------------|
| B16212K | 166220 | Copper, Steel | BTKP | B162, Two Stud | Solid Round Steel, 90° Angle | 12 mm Diameter Solid |

| Table 2/3 | | | | | | |
|----------------|----------------|------------|-----------|--------------|--------------|------------------|
| Catalog Number | Article Number | Length (L) | Depth (D) | Width 1 (W1) | Width 2 (W2) | Thread Size (TS) |
| B16212K | 166220 | 500mm | 45mm | 44.5 mm | 85 mm | M12 |

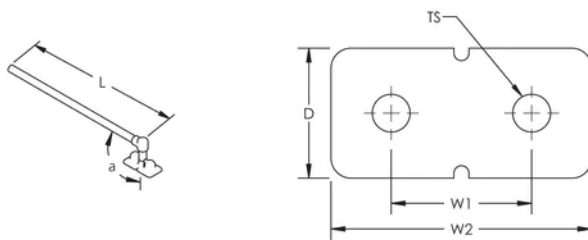
| Table 3/3 | | | | | | |
|----------------|----------------|-----------|----------------------|-------------------|-------------------------|-------------------------------------|
| Catalog Number | Article Number | Angle (a) | Rebar Assembly Type | Hardware Included | Earthbridge Application | Complies With |
| B16212K | 166220 | 90 ° | Arc Welding to Rebar | Yes | Tunnel | EN IEC® 62561-1 Class H 100kA |

ADDITIONAL PRODUCT DETAILS

Includes (2) brass bolts, (2) brass washers, (2) plastic caps, and (1) protective label.

| DB-16-C-70-S-050-C | | |
|--------------------|-------------------------------|---|
| DB | Earth Point | DB: 1 hole BT: 2 holes BF: 4 holes LU: M16 lug TA: tape |
| 16 | Thread Size | 10: M10 12: M12 16: M16 40: Tape 40x5mm 30: Tape 30x4mm |
| C | Conductor Type | K: Steel Rond C: Y/G Cable T: Steel Bar F: Steel Bar 4mm N: NYY-O Cable H: N2XH-0 Cable |
| 70 | Conductor Size | 12: D12mm 16: D16mm 30: 30x4mm 40: 40x5mm 50: 50mm ² 70: 70mm ² 95: 95mm ² |
| S | Conductor Angle | S: 0° P: 90° A: 45° |
| 050 | Length (cm) | xxx |
| x | Termination (option if cable) | SR: Solid Round EP: Earthpoint perpendicular ES: Earthpoint straight TA: Tape of 100mm TP: Tape of 150mm LU: M16 lug |
| x | Bolts & Washer | - : No Hardware H: With Hardware |
| C | Packaging | - : by unit (Made-to-Stock) C: 5 pieces (Made-to-Order) G: 25 pieces (Made-to-Order) |

DIAGRAMS



WARNING

nVent products shall be installed and used only as indicated in nVent's product instruction sheets and training materials. Instruction sheets are available at www.nvent.com and from your nVent customer service representative. Improper installation, misuse, misapplication or other failure to completely follow nVent's instructions and warnings may cause product malfunction, property damage, serious bodily injury and death and/or void your warranty.

North America

+1.800.753.9221
Option 1 – Customer Care
Option 2 – Technical
Support

Europe

Netherlands:
+31 800-0200135
France:
+33 800 901 793

Europe

Germany:
800 1890272
Other Countries:
+31 13 5835404

APAC

Shanghai:
+ 86 21 2412 1618/19
Sydney:
+61 2 9751 8500



Our powerful portfolio of brands:

CADDY ERICO HOFFMAN ILSCO SCHROFF TRACHTE