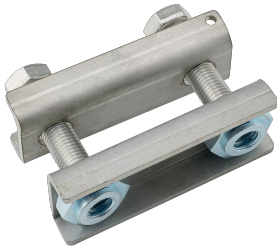


# nVent ERIFLEX Flexbus HCBC Clamp

## Data Solutions



### CERTIFICATIONS



### FEATURES

Rigid design assures even contact pressure

Installs quickly and easily

Ideal for on-site modifications

Made with non-magnetic material stainless steel for high-current connections to prevent the formation of magnetic fields

Contains crimped self-locking nut for vibration resistance and easy installation

No drilling needed to fix the Flexbus Conductor on the transformer/power supply palm

Includes voltage detection connecting point

RoHS compliant

### SPECIFICATIONS

**Material:** Stainless Steel 304 (EN 1.4301)

Table 1/2

Catalog Number	Article Number	A	B	C	D	Thickness (T)
FLEXCLAMP63	508190	63mm	123mm	20mm	43mm	4mm
FLEXCLAMP80	508191	80mm	140mm	20mm	43mm	4mm
FLEXCLAMP160	508194	160mm	220mm	20mm	43mm	4mm
FLEXCLAMP100	508192	100mm	160mm	20mm	43mm	4mm
FLEXCLAMP120	508193	120mm	180mm	20mm	43mm	4mm

Table 2/2

Catalog Number	Article Number	Hole Size (HS)	Torque (TQ)	Unit Weight	Conductor Width
FLEXCLAMP63	508190	5.5mm	100N·m	0.53kg	30 – 63mm
FLEXCLAMP80	508191	5.5mm	100N·m	0.84kg	70 – 80mm
FLEXCLAMP160	508194	5.5mm	100N·m	1.32kg	130 – 160mm
FLEXCLAMP100	508192	5.5mm	100N·m	0.92kg	90 – 100mm
FLEXCLAMP120	508193	5.5mm	100N·m	1kg	110 – 120mm

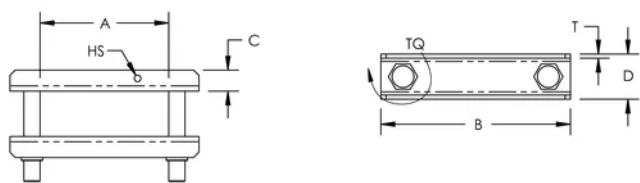
## ADDITIONAL PRODUCT DETAILS

It is mandatory to use the HCBC Clamp associated with the HCBC Plate for proper Flexbus Conductor connection.

The minimum clearance distance is 14mm according to IEC 61439-1 with air pollution degree 3. If this distance cannot be respected, insulation material should be added between the metallic LV cover and the HCBC clamp. Flexbus IP2x Boots is also a solution.

If the Flexbus Conductors have a horizontal entry, an extender needs to be added between the power supply palm and HCBC Clamp and Plate.

## DIAGRAMS



## WARNING

nVent products shall be installed and used only as indicated in nVent's product instruction sheets and training materials. Instruction sheets are available at [www.nvent.com](http://www.nvent.com) and from your nVent customer service representative. Improper installation, misuse, misapplication or other failure to completely follow nVent's instructions and warnings may cause product malfunction, property damage, serious bodily injury and death and/or void your warranty.



Our powerful portfolio of brands:

**CADDY   ERICO   HOFFMAN   ILSCO   SCHROFF   TRACHTE**