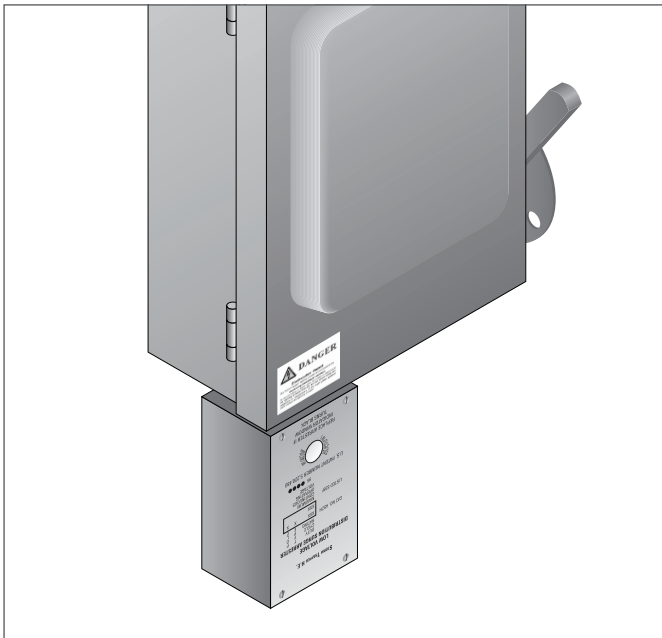




PYROTENAX

SE-Protect

Lightning Arrester Protection for System 1850-SE Installation Instructions



KIT CONTENTS

Part No.	Qty	Description
CH364	1	3-phase 600 V, 200 A switch
JKS-150	3	150 A Bussman JKS fuses
T90/R90	3	3' length of #6 AWG R 90 or TEW
ASZH480E300	1	Storm trapper lightning arrester
	2	Warning label

DESCRIPTION

This installation instruction is for lightning arrester protection for the System 1850-SE service entrance cable system. For technical support, call nVent at (800) 545-6258.

ASSEMBLY

1. Remove the fuses, lightning arrester, 6 AWG conductors and warning label from the switch enclosure.
2. Read and understand the electrical connection (see drawing on page 2)
3. Mount the switch immediately adjacent to the utility connection box such that the 6 AWG wire length required for each phase is less than 3 feet.
4. Run the 6 AWG wire from the phase conductors to the switch contacts.
5. Insert the 150 A fuses.
6. Mount the storm trapper arrester externally in a knock-out on the switch. The storm trapper lightning arrester has a small window to verify that it is in operable condition. The paper in the window should be white, and changes to black if the arrester has been overloaded.
7. Apply the warning label to the switch above the Storm Trapper lightning arrester.

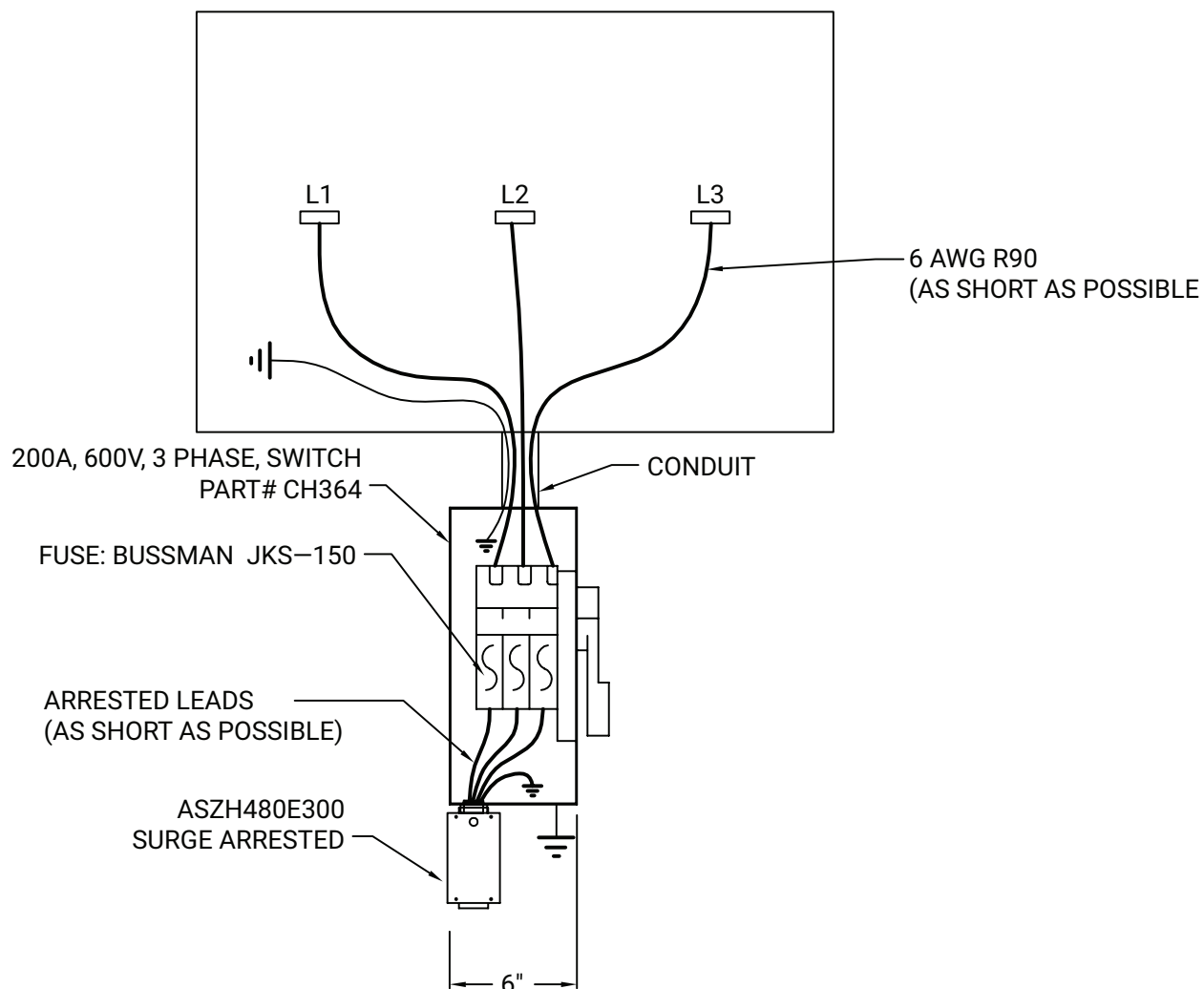
MAINTENANCE

The switch must be used to disconnect the fuses and arrester in order to change out the arrester or fuses, or to do any work inside the enclosure.

The fuse should be checked for continuity after thunderstorm activities in the vicinity, and otherwise at intervals of not more than 6 months. If it has operated to clear a fault, both the fuse and the lightning arrester must be replaced.

The arrester condition should be confirmed at the same time by visually checking the color of the indicator in the arrester window. If it has turned black, the arrester must be replaced.

Electrical Connection



North America

Tel +1.800.545.6258
Fax +1.800.527.5703
thermal.info@nvent.com

Europe, Middle East, Africa

Tel +32.16.213.511
Fax +32.16.213.604
thermal.info@nvent.com

Asia Pacific

Tel +86.21.2412.1688
Fax +86.21.5426.3167
cn.thermal.info@nvent.com

Latin America

Tel +1.713.868.4800
Fax +1.713.868.2333
thermal.info@nvent.com



nVent.com