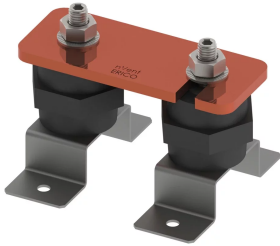


# Disconnecting Link

## Data Solutions



### FEATURES

Allows for quick and easy disconnection of the earthing system to facilitate testing of the earth in isolation

High conductivity, hard drawn, electrolytic tough pitch copper per EN 13601

Includes halogen-free polyamide insulators, stainless steel (EN 1.4401) hardware and mounting brackets

### SPECIFICATIONS

**Material:** Copper

**Complies With:** IEC® EN 62561-1:2017 Class H

Table 1/2

| Catalog Number | Finish | Thread Size (TS) | Height (H) | Width 1 (W1) | Width 2 (W2) | Thickness (T) |
|----------------|--------|------------------|------------|--------------|--------------|---------------|
| DLINKT         | Tinned | M10              | 90mm       | 100mm        | 50mm         | 6mm           |
| DLINKC         | Bare   | M10              | 90mm       | 100mm        | 50mm         | 6mm           |

Table 2/2

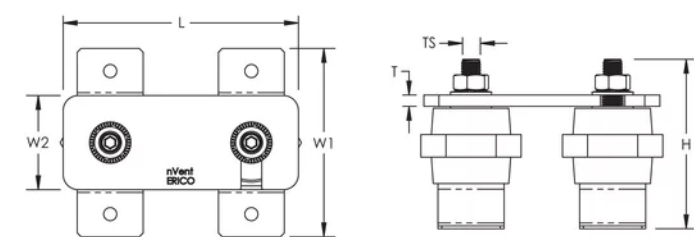
| Catalog Number | Unit Weight |
|----------------|-------------|
| DLINKT         | 0.77kg      |

| Catalog Number | Unit Weight |
|----------------|-------------|
| DLINKC         | 0.77kg      |

### ADDITIONAL PRODUCT DETAILS

Tinned finish is 8 microns according to ASTM B545 Service Class "C" for corrosive environments.

### DIAGRAMS



### WARNING

nVent products shall be installed and used only as indicated in nVent's product instruction sheets and training materials. Instruction sheets are available at [www.nvent.com](http://www.nvent.com) and from your nVent customer service representative. Improper installation, misuse, misapplication or other failure to completely follow nVent's instructions and warnings may cause product malfunction, property damage, serious bodily injury and death and/or void your warranty.



Our powerful portfolio of brands:

CADDY   ERICO   HOFFMAN   ILSCO   SCHROFF   TRACHTE