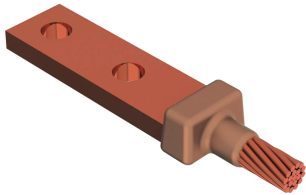
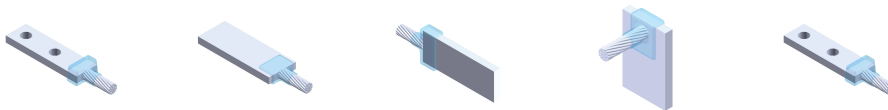


# Cable to Lug or Busbar, Rail



nVent ERICO Cadweld applications for railway properties utilize the nVent ERICO Cadweld Plus F80 and the nVent ERICO Cadweld F80 welding material alloys. nVent ERICO Cadweld exothermically welded connections are engineered to provide a permanent, molecular bond that will not loosen or corrode, enabling connection of dissimilar materials. The connections are designed to perform for the life of the conductor and/or installation. The nVent ERICO Cadweld connection has a current carrying capacity equal to or greater than that of the conductor and will withstand repeated fault currents without failing during operation. Once completed, installers can clearly ensure quality by visually inspecting the new connection.

## DIAGRAMS



## FEATURES

Forms a permanent, low resistance connection

Provides a molecular bond

nVent ERICO Cadweld Exothermic Connections are rated with the same current capacity as the conductor

Portable installation equipment with no external source of power required

Installers can be easily trained to make nVent ERICO Cadweld Exothermic Connections

Connections can be visually inspected

Mold Families LA and LE can be used with straight or offset lugs

## SPECIFICATIONS

Table 1/1

Catalog Number	Mold Family	Lug/Busbar Size	Conductor Size	Conductor Outer Diameter, Nominal
PB10LA1GDE	LA	3/16" x 1"	#6 Solid	4.11mm

Catalog Number	Mold Family	Lug/Busbar Size	Conductor Size	Conductor Outer Diameter, Nominal
PB10GLCE1H	GL	1/8" x 1"	#6 Concentric	4.67mm
PB10LA1HEH	LA	1/4" x 2"	#6 Concentric	4.67mm
PB10LA1HEK	LA	1/4" x 3" and wider	#6 Concentric	4.67mm
PB10GLEG2G	GL	1/4" x 1 1/2"	2/0 Concentric	10.62mm
PB10LA2GEE	LA	1/4" x 1"	2/0 Concentric	10.62mm
PB10LA2GEF	LA	1/4" x 1 1/4"	2/0 Concentric	10.62mm
PB10PLCE2G	PL	1/8" x 1"	2/0 Concentric	10.62mm
PB10GLCES5	GL	1/8" x 1"	19/#9 Copperweld	13.36mm
PB10LA2QEG	LA	1/4" x 1 1/2"	4/0 Concentric	13.41mm
PB10GLEGS6	GL	1/4" x 1 1/2"	3/0 Composite	14.53mm
PB10LA2VEG	LA	1/4" x 1 1/2"	250 kcmil Concentric	14.61mm
PB10LAS6EE	LA	1/4" x 1"	3/0 Composite	14.53mm
PB10LBS6EF	LB	1/4" x 1 1/4"	3/0 Composite	14.53mm
PB10GLEE3B	GL	1/4" x 1"	300 kcmil Ropelay	20.32mm
PB10LA3BEE	LA	1/4" x 1"	300 kcmil Ropelay	20.32mm
PB10GLGG3Q	GL	3/8" x 1 1/2"	500 kcmil Concentric	20.65mm
PB10LA3QGH	LA	3/8" x 2"	500 kcmil Concentric	20.65mm
PB19ME3QEG	ME	1/4" x 1 1/2"	500 kcmil Concentric	20.65mm

Catalog Number	Mold Family	Lug/Busbar Size	Conductor Size	Conductor Outer Diameter, Nominal
PB59ME3QGG	ME	3/8" x 1 1/2"	500 kcmil Concentric	20.65mm
PB10LA3FEF	LA	1/4" x 1 1/4"	350 kcmil Ropelay	22.35mm
PB10LA3KEG	LA	1/4" x 1 1/2"	400 kcmil Ropelay	23.62mm
PB10LA3SJH	LA	1/2" x 2"	500 kcmil Ropelay	26.42mm
PB50LA4YJH	LA	1/2" x 2"	10 mm <sup>2</sup> Concentric	29.26mm
PB50PL3SJH	PL	1/2" x 2"	500 kcmil Ropelay	26.42mm
PB10GLEG3S	GL	1/4" x 1 1/2"	500 kcmil Ropelay	26.42mm
PB10LA3SEG	LA	1/4" x 1 1/2"	500 kcmil Ropelay	26.42mm
PB19ME3SEG	ME	1/4" x 1 1/2"	500 kcmil Ropelay	26.42mm
PB10LA4XEK	LA	1/4" x 3" and wider	#24 Ropelay	27.18mm
PB10GLGG3S	GL	3/8" x 1 1/2"	500 kcmil Ropelay	26.42mm
PB10LA3SGG	LA	3/8" x 1 1/2"	500 kcmil Ropelay	26.42mm
PB59ME3SGG	ME	3/8" x 1 1/2"	500 kcmil Ropelay	26.42mm
PB50LA5FGH	LA	3/8" x 2"	#24 Ropelay	35.18mm

## ADDITIONAL PRODUCT DETAILS

For applications such as computer room, tunnel or other low-ventilation areas, specify a smokeless nVent ERICO Cadweld Exolon mold. Add an XL prefix to the standard mold part number when ordering (for example, a PB10GR162G becomes XLPB10GR162G). Similarly, nVent ERICO Cadweld Exolon welding material is also designated by the XL prefix (for example, PB90 becomes XLPB90).

A gap between conductors may be required. See mold tag for more information.

XXXX-XX-XX-XX-L-M-W		
XXXX	Price Key	
XX	Mold Family	
XX	Lug/Busbar Size	
XX	Conductor Size	
L*	Split Crucible	Crucible section is split on molds designed with horizontal opening for easier cleaning
M*	Mold Only	
W*	Wear Plates	Reduce mechanical abrasion of molds at cable entry points

\* Empty if none

## WARNING

nVent products shall be installed and used only as indicated in nVent's product instruction sheets and training materials. Instruction sheets are available at [www.nvent.com](http://www.nvent.com) and from your nVent customer service representative. Improper installation, misuse, misapplication or other failure to completely follow nVent's instructions and warnings may cause product malfunction, property damage, serious bodily injury and death and/or void your warranty.

### North America

+1.800.753.9221  
Option 1 – Customer Care  
Option 2 – Technical  
Support

### Europe

Netherlands:  
+31 800-0200135  
France:  
+33 800 901 793

### Europe

Germany:  
800 1890272  
Other Countries:  
+31 13 5835404

### APAC

Shanghai:  
+ 86 21 2412 1618/19  
Sydney:  
+61 2 9751 8500



Our powerful portfolio of brands:

CADDY   ERICO   HOFFMAN   ILSCO   SCHROFF   TRACHTE