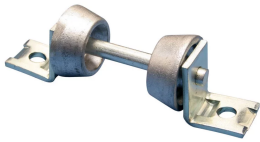


ROL13 Strut Mounted Roller



FEATURES

Designed for strut mounting

For applications where there is longitudinal pipe movement

SPECIFICATIONS

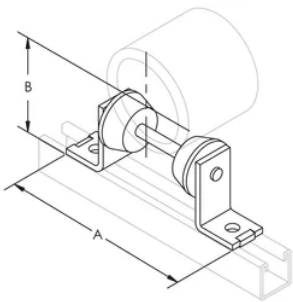
Finish: Electrogalvanized

Material: Steel

Catalog Number
ROL13034EG
ROL13046EG
ROL13068EG

Pipe Size	Saddle Number	Covering Thickness	Outer Diameter	Radius	A	B
4"	None	-	114.3 mm	57.1 mm	209.5 mm	114.3 mm
	630	27.0 mm	181.0 mm	90.5 mm	234.9 mm	144.5 mm
	631	39.7 mm	206.4 mm	103.2 mm	257.2 mm	154.0 mm
	632	52.4 mm	231.8 mm	115.9 mm	257.2 mm	168.3 mm
	633	65.1 mm	254.0 mm	127.0 mm	257.2 mm	179.4 mm
	634	77.8 mm	285.8 mm	142.9 mm	276.2 mm	193.7 mm
	635	103.2 mm	330.2 mm	165.1 mm	276.2 mm	217.5 mm
5"	None	-	142.9 mm	71.4 mm	209.5 mm	128.6 mm
	630	25.4 mm	209.5 mm	104.8 mm	257.2 mm	155.6 mm
	631	38.1 mm	238.1 mm	119.1 mm	257.2 mm	169.9 mm
	632	50.8 mm	263.5 mm	131.8 mm	276.2 mm	177.8 mm
	633	65.1 mm	285.7 mm	142.9 mm	276.2 mm	193.7 mm
	634	77.8 mm	314.3 mm	157.2 mm	276.2 mm	206.4 mm
	635	106.4 mm	361.9 mm	181.0 mm	276.2 mm	233.4 mm
6"	None	-	168.3 mm	84.1 mm	234.9 mm	138.1 mm
	630	25.4 mm	228.6 mm	114.3 mm	257.2 mm	166.7 mm
	631	38.1 mm	257.2 mm	128.6 mm	276.2 mm	177.8 mm
	632	50.8 mm	279.4 mm	139.7 mm	276.2 mm	190.5 mm
	633	63.5 mm	314.3 mm	157.2 mm	276.2 mm	208.0 mm
	634	76.2 mm	342.9 mm	171.4 mm	276.2 mm	219.1 mm
	635	104.8 mm	384.2 mm	192.1 mm	276.2 mm	246.1 mm
8"	None	-	219.1 mm	109.5 mm	257.2 mm	161.9 mm
	631	38.1 mm	304.8 mm	152.4 mm	276.2 mm	203.2 mm
	632	50.8 mm	330.2 mm	165.1 mm	276.2 mm	217.5 mm
	633	68.3 mm	368.3 mm	184.1 mm	276.2 mm	236.5 mm
	634	79.4 mm	390.5 mm	195.3 mm	276.2 mm	249.2 mm
	635	104.8 mm	441.3 mm	220.7 mm	276.2 mm	276.2 mm

DIAGRAMS



WARNING

nVent products shall be installed and used only as indicated in nVent's product instruction sheets and training materials. Instruction sheets are available at www.nvent.com and from your nVent customer service representative. Improper installation, misuse, misapplication or other failure to completely follow nVent's instructions and warnings may cause product malfunction, property damage, serious bodily injury and death and/or void your warranty.

North America

+1.800.753.9221

Option 1 – Customer Care

Option 2 – Technical

Support

Europe

Netherlands:

+31 800-0200135

France:

+33 800 901 793

Europe

Germany:

800 1890272

Other Countries:

+31 13 5835404

APAC

Shanghai:

+ 86 21 2412 1618/19

Sydney:

+61 2 9751 8500



Our powerful portfolio of brands:

CADDY

ERICO

HOFFMAN

ILSCO

SCHROFF

TRACHTE

