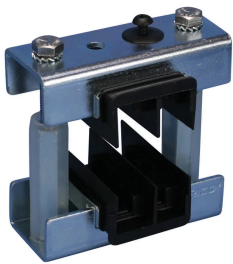


# ABS Adjustable Busbar Support Insulator Module

## Power Utilities



### CERTIFICATIONS



### FEATURES

Modules provide flexibility to select distance between phases and supports

Extremely robust construction

Halogen free insulators

RoHS compliant

### SPECIFICATIONS

Table 1/2

Catalog Number	Article Number	Max Working Voltage, IEC (Ui)	Working Temperature	Typical Application Current Rating	Busbars per Phase	Busbar Thickness
ABS1-5MOD	560860	1,000 VAC, 1,500 VDC	-40 to 130 °C	1,700 A Max	1	5 mm

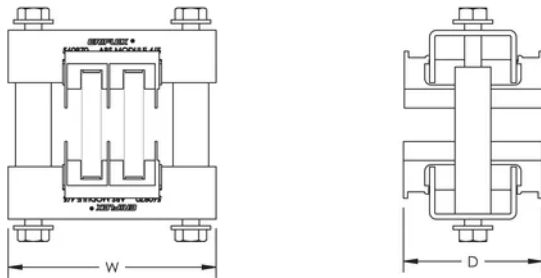
Table 2/2

Catalog Number	Article Number	Busbar Width	Width (W)	Unit Weight
ABS1-5MOD	560860	50 – 125 mm	74 mm	0.640 kg

## ADDITIONAL PRODUCT DETAILS

ABS Adjustable Busbar Support High Ampacity Kit available to support up to 200 mm (7.87") busbar width for applications up to 7400 A.

## DIAGRAMS



## WARNING

nVent products shall be installed and used only as indicated in nVent's product instruction sheets and training materials. Instruction sheets are available at [www.nvent.com](http://www.nvent.com) and from your nVent customer service representative. Improper installation, misuse, misapplication or other failure to completely follow nVent's instructions and warnings may cause product malfunction, property damage, serious bodily injury and death and/or void your warranty.



Our powerful portfolio of brands:

**CADDY ERICO HOFFMAN ILSCO SCHROFF TRACHTE**