

RMF Hex Male-Female Reducer



FEATURES

Hexagonal shape

SPECIFICATIONS

Finish: Electrogalvanized

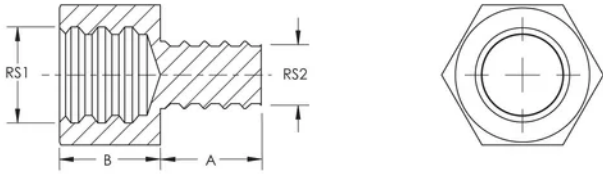
Material: Steel

Table 1/1

Catalog Number	Article Number	Rod Size 1 (RS1)	Rod Size 2 (RS2)	A	B
RMFM8M6	583720	8	6	8 mm	12 mm
RMFM6M8	583710	6	8	8 mm	12 mm
RMFM10M8	583750	10	8	8 mm	14 mm
RMFM12M8	583770	12	8	8 mm	14 mm
RMFM8M10	583730	8	10	9 mm	13 mm
RMFM8M12	583740	8	12	10 mm	13 mm
RMFM12M10	583780	12	10	10 mm	15 mm

Catalog Number	Article Number	Rod Size 1 (RS1)	Rod Size 2 (RS2)	A	B
RMFM10M12	583760	10	12	10 mm	14 mm

DIAGRAMS



WARNING

nVent products shall be installed and used only as indicated in nVent's product instruction sheets and training materials. Instruction sheets are available at www.nvent.com and from your nVent customer service representative. Improper installation, misuse, misapplication or other failure to completely follow nVent's instructions and warnings may cause product malfunction, property damage, serious bodily injury and death and/or void your warranty.

North America

+1.800.753.9221
Option 1 – Customer Care
Option 2 – Technical
Support

Europe

Netherlands:
+31 800-0200135
France:
+33 800 901 793

Europe

Germany:
800 1890272
Other Countries:
+31 13 5835404

APAC

Shanghai:
+ 86 21 2412 1618/19
Sydney:
+61 2 9751 8500



Our powerful portfolio of brands:

CADDY ERICO HOFFMAN ILSCO SCHROFF TRACHTE

