

# T-Series Vertical Low Slip Sleeve



The low slip vertical T-Series sleeve's increased sleeve length reduces slip (for extreme code requirements) and improves splice performance when the rib pattern or spacing does not meet the minimum product specifications.

## FEATURES

Designed to connect vertical reinforcing bars and angular reinforcing bars greater than 45 degrees

Used to splice the same diameter bars

Additional length improves performance

Works with saw cut, flame cut and sheared bars

Can be visually inspected after installation

## SPECIFICATIONS

**Finish:** Plain

**Material:** Steel

**100% U.S. Domestic Content:** Yes

Table 1/2

Catalog Number	Rebar Size, Metric	Rebar Size, US	Rebar Size, Canada	Diameter 1 (Ø1)	Diameter 2 (Ø2)	Length 1 (L1)
RBW6555A	16 mm	#5	15M	35 mm	22 mm	152 mm
RBW6556A	20 mm	#6	20M	38 mm	25 mm	178 mm
RBW6557A	22 mm	#7		41 mm	29 mm	178 mm
RBW6558A	25 mm	#8	25M	48 mm	32 mm	178 mm

CatalogNumber	Rebar Size, Metric	Rebar Size, US	Rebar Size, Canada	Diameter 1(Ø1)	Diameter 2(Ø2)	Length 1 (L1)
RBW6559A	28 mm	#9	30M	54 mm	38 mm	178 mm
RBW65510A	32 mm	#10		57 mm	41 mm	191 mm
RBW65511A	36 mm	#11	35M	64 mm	44 mm	203 mm
RBW65514A	43 mm	#14	45M	76 mm	54 mm	229 mm
RBW65518A	57 mm	#18	55M	95 mm	67 mm	279 mm

Table 2/2

Catalog Number	Length 2 (L2)	Unit Weight
RBW6555A	76 mm	0.68 kg
RBW6556A	89 mm	0.86 kg
RBW6557A	89 mm	0.95 kg
RBW6558A	89 mm	1.36 kg
RBW6559A	89 mm	1.6 kg
RBW65510A	95 mm	1.81 kg
RBW65511A	102 mm	2.54 kg
RBW65514A	114 mm	4.04 kg
RBW65518A	140 mm	7.94 kg

**Designed to Meet:**

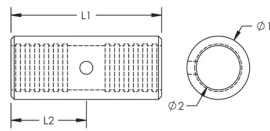
AASHTO;ABNT NBR 8548:1984;ACI 318 Type 1 (125% Specified Yield);ACI 318 Type 2 (Specified Tensile);ACI 349;ACI 359;AS3600

ADDITIONAL PRODUCT DETAILS

Prior to installation, please read and understand all of the detailed instructions and safety notices provided in the nVent LENTON Cadweld Rebar Splicing System Instruction Manual.

Sizes not shown may be available by special order. Contact your nVent LENTON representative for more information.

DIAGRAMS



WARNING

nVent products shall be installed and used only as indicated in nVent's product instruction sheets and training materials. Instruction sheets are available at [www.nvent.com](http://www.nvent.com) and from your nVent customer service representative. Improper installation, misuse, misapplication or other failure to completely follow nVent's instructions and warnings may cause product malfunction, property damage, serious bodily injury and death and/or void your warranty.

North America

+1.800.753.9221  
Option 1 – Customer Care  
Option 2 – Technical  
Support

Europe

Netherlands:  
+31 800-0200135  
France:  
+33 800 901 793

Europe

Germany:  
800 1890272  
Other Countries:  
+31 13 5835404

APAC

Shanghai:  
+ 86 21 2412 1618/19  
Sydney:  
+61 2 9751 8500



Our powerful portfolio of brands:

CADDY   ERICO   HOFFMAN   ILSCO   SCHROFF   TRACHTE