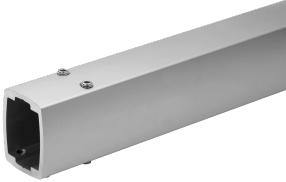


Syspend 180-Max Tube



Syspend 180-Max tubes provide structural integrity and act as conduit for equipment wiring. Tubes attach to system components with 6 set screws on each end of the tube. Set screws allow for easy adjustment and leveling of the system. Set screws are provided with thread sealer providing secure connections.

FEATURES

Set screws are provided with system couplings, not the tubes

Tubes 750 mm (29.53) and longer include drilling template to assist with drilling and tapping the holes when tube is cut to length

Assembled Syspend 180 HMI Arm System has a max weight load of 180 lb. (81.6 kg)

SPECIFICATIONS

Material: Aluminum
Finish: Powder Coated

Table 1/1					
Catalog Number	Height	Width	Depth	Thickness	Quick Ship
S1MT1000	55mm	75mm	1000mm	5.5mm	No
S1MT1250	55mm	75mm	1250mm	5.5mm	No
S1MT1500	55mm	75mm	1500mm	5.5mm	No
S1MT250	55mm	75mm	250mm	5.5mm	No
S1MT500	55mm	75mm	500mm	5.5mm	No
S1MT750	55mm	75mm	750mm	5.5mm	No

WARNING

nVent products shall be installed and used only as indicated in nVent's product instruction sheets and training materials. Instruction sheets are available at www.nvent.com and from your nVent customer service representative. Improper installation, misuse, misapplication or other failure to completely follow nVent's instructions and warnings may cause product malfunction, property damage, serious bodily injury and death and/or void your warranty.



Our powerful portfolio of brands:

CADDY ERICO HOFFMAN ILSCO SCHROFF TRACHTE